

## How to Enable WPA function for Wireless-B/G products?

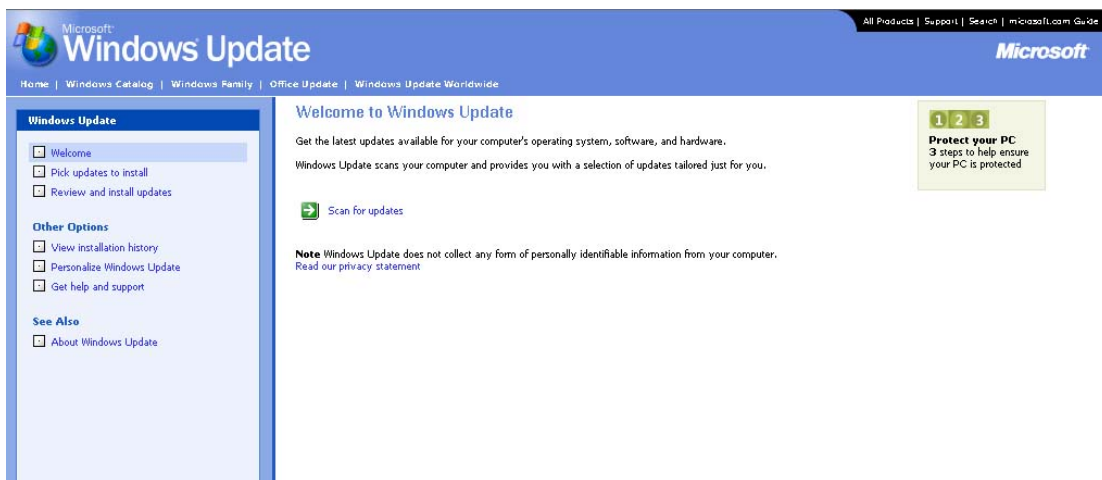
- \* **Suitable for Wireless-B CNUSB-611, CNWLC-811, CNWL-311 and all Wireless-G products.**
- \* **Only under WinXP, WinXP SP1, WinXP SP2, you can enable the WPA Function.**

### A. Update the WPA Package

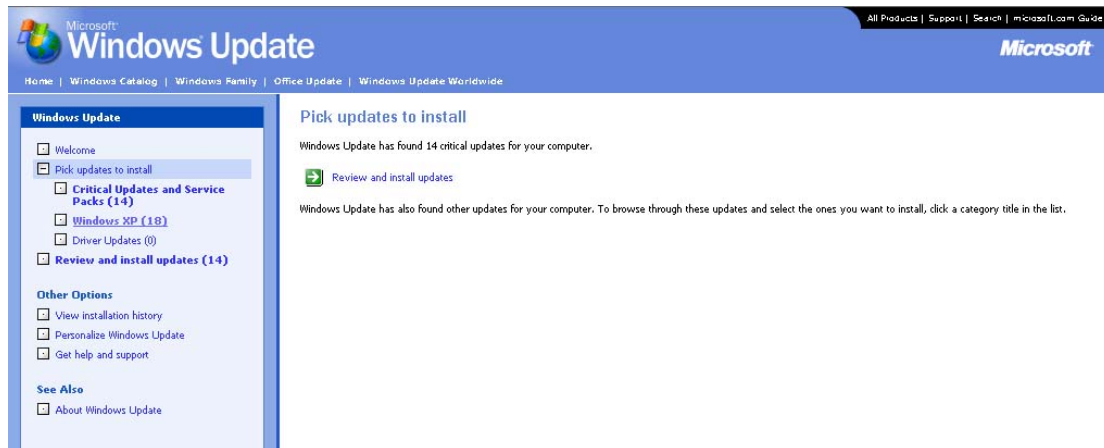
1. Use Internet Explorer to update the Microsoft Windows Update. Double click on “Internet Explorer” and select “ Windows Update”



2. Windows Update will show:



3. Click “ Scan for updates”, you will see the following:



- Click “Windows XP” and select KB826942 package. You will see the following:



- Click “Add” to update the Windows.
- After update the WPA package, the system will restart

## B. How to enable WPA function

- If your driver CD lost, please download driver from CNet web site <http://www.cnet.com.tw/pwireless.html>,

**CWD-854**  
Wireless-G USB Dongle



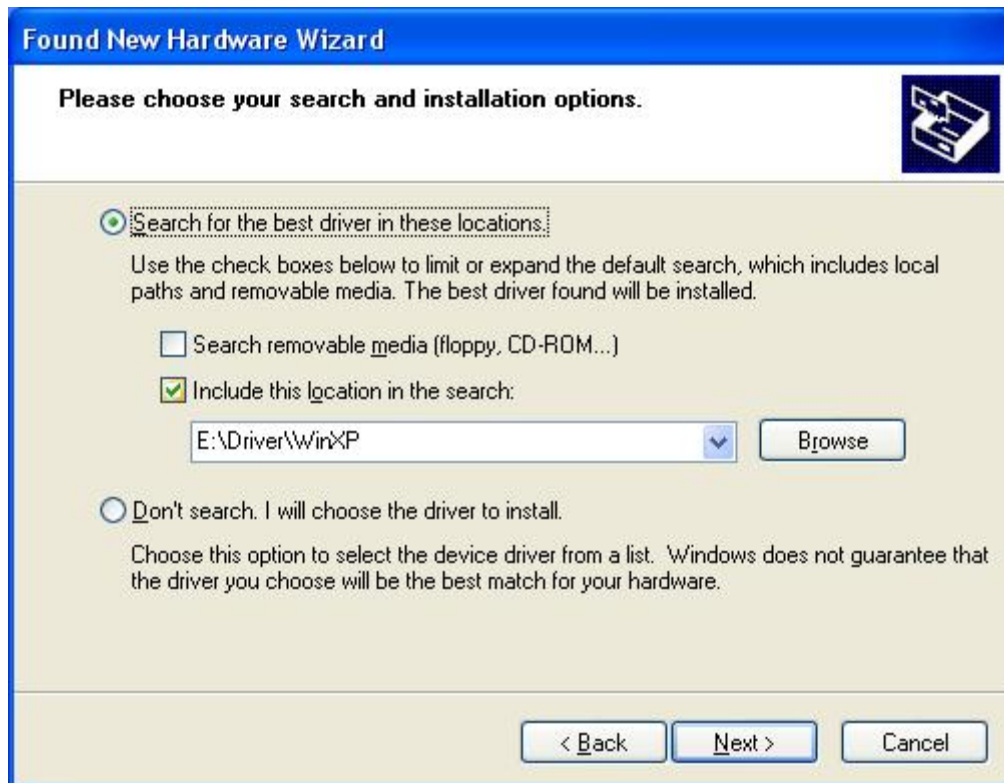
#### KEY FEATURES

- Investment Protection: 5 Times Faster and Interoperate with existing Wireless-B Equipment
- Seamlessly 40/64/128 bit WEP and advanced 256-bit WPA (Wi-Fi Protected Access) Encryption Provides

2. Install the CWD-854, you will see the following:



3. Select "Install from a list or specific location (Advanced)" and click "Next".  
You will see the following:



4. Select "Include this location in the search" and click "Browse" to browse the driver location.



5. During the installation, you will see the following, click "Continue Anyway".



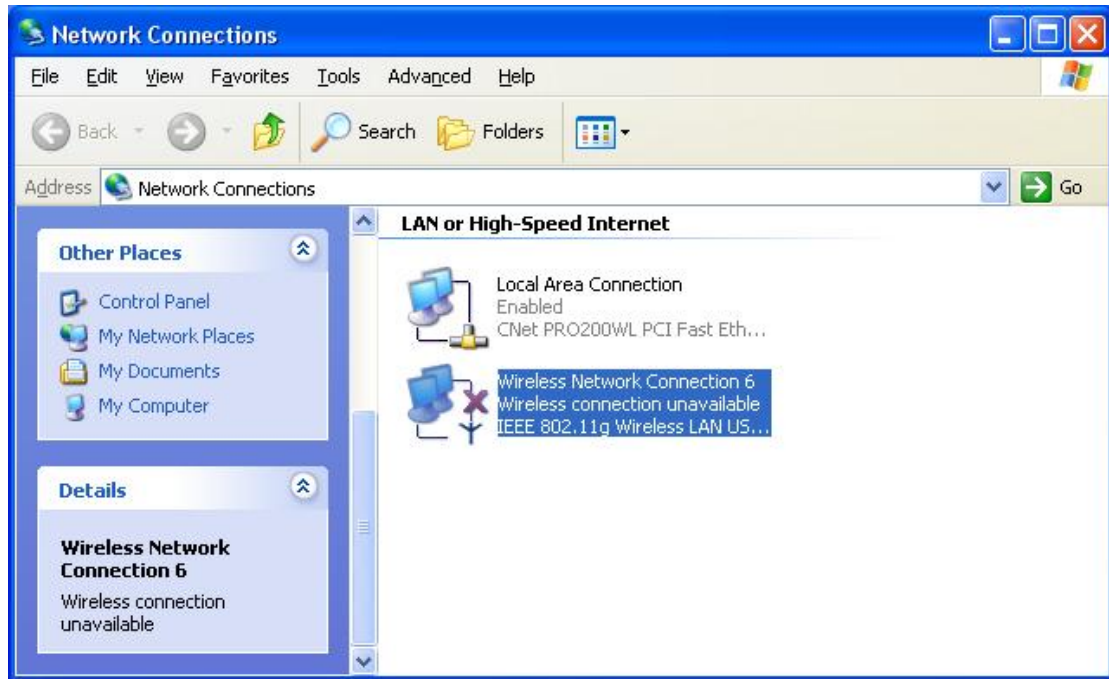
6. When you see the following information, your installation is now successful.



7. Then the system will restart.



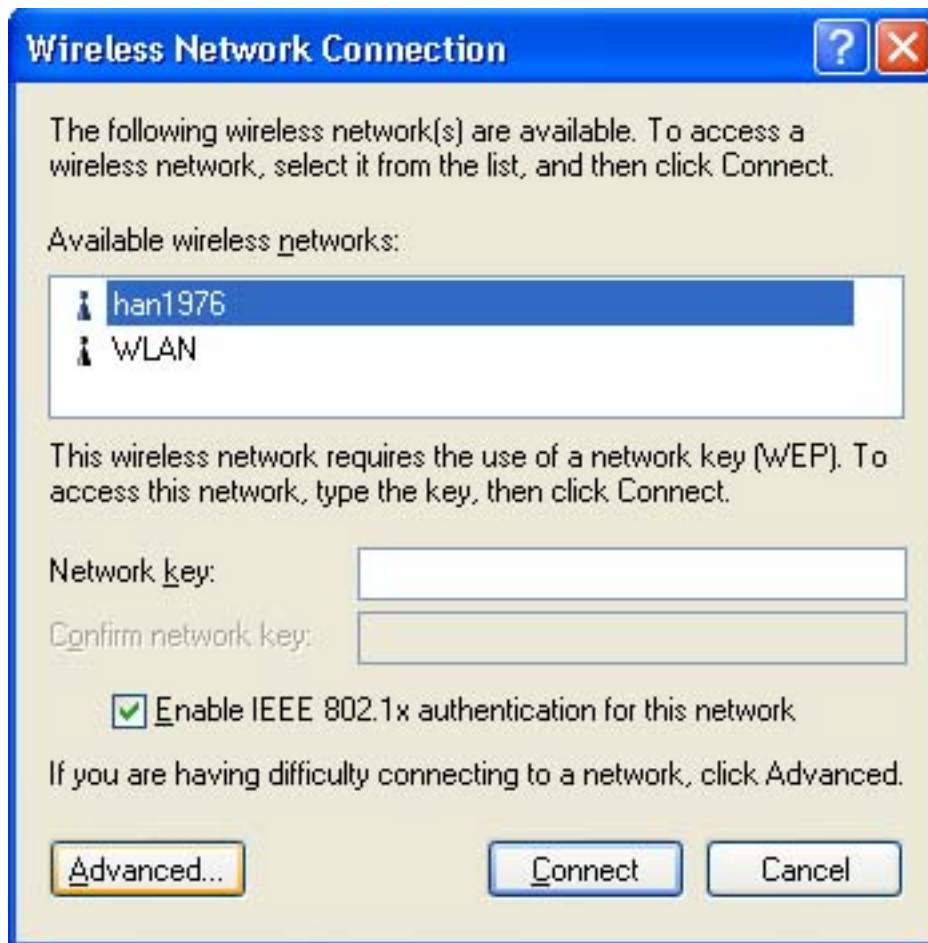
8. After reboot, Click "start" → "Settings" → "Network Connections". You will see the following:



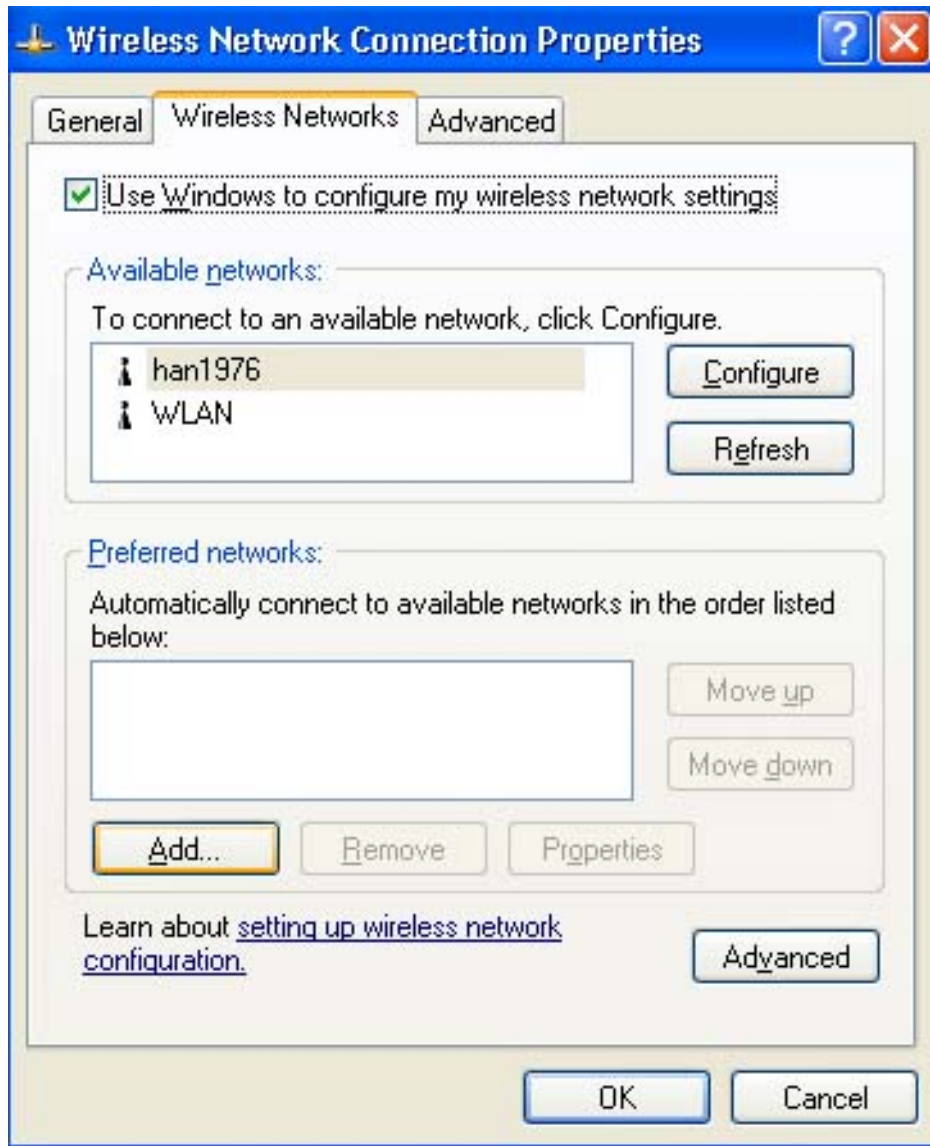
9. Select "IEEE 802.11g Wireless LAN USB Adapter" and click right button of your mouse. You will see the following:



10. Select "View Available Wireless Networks". You will see the following

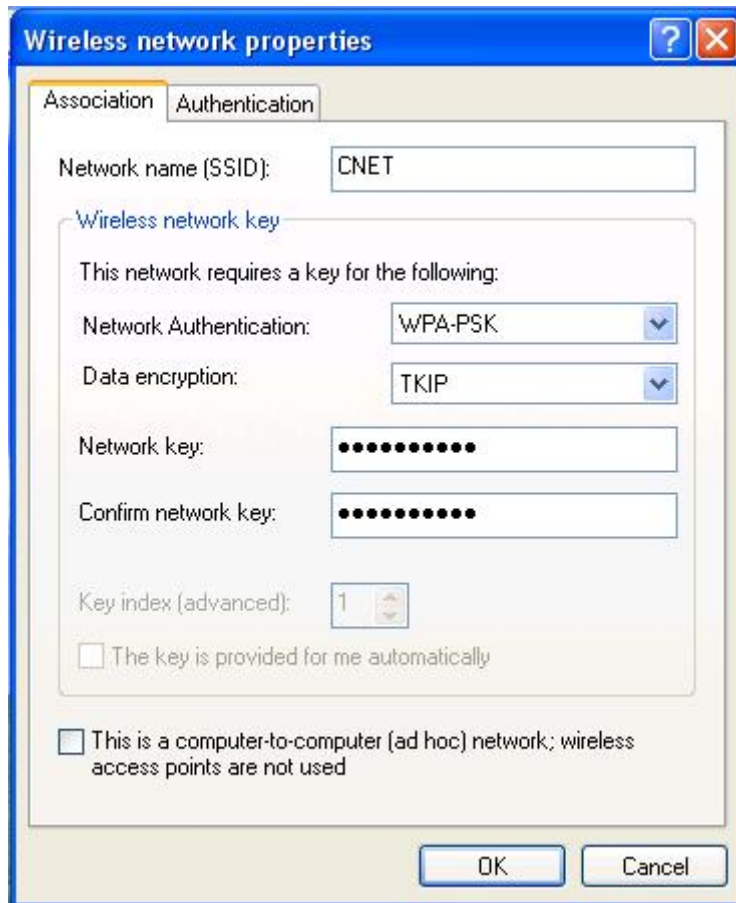


11. Click "Advanced", you will see the following:

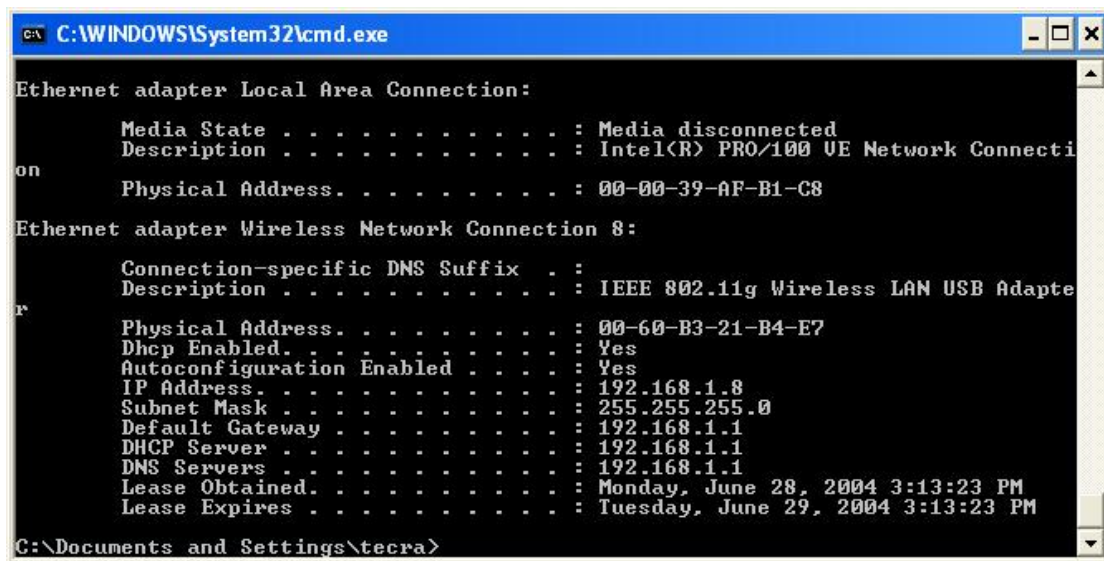
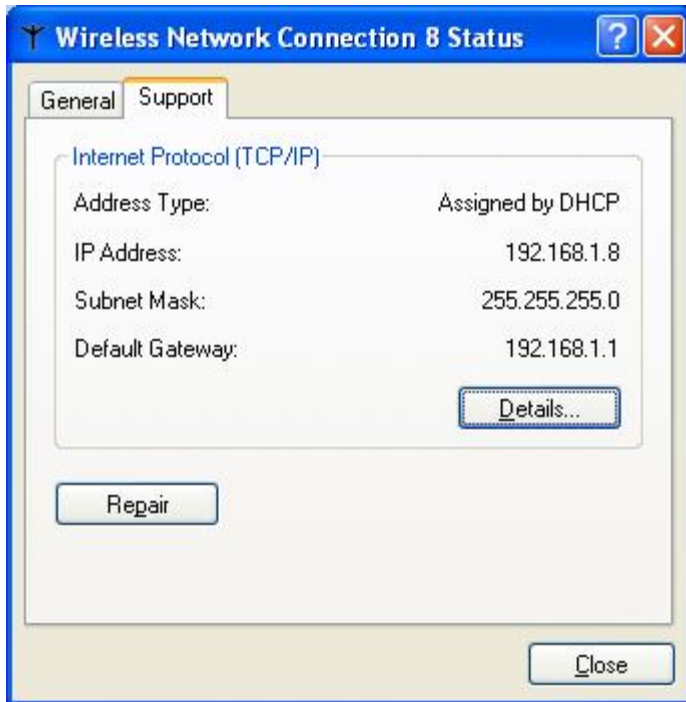


12. Click "Add" to add the profile.





13. Select "WPA-PSK" in "Network Authentication" and "TKIP" in "Data encryption", fill a network key password (less than 10 words or number) in the "Network key" and "Confirm network key"(same password), and then click "OK".



14. The USB Dongle will get IP automatically from Router. .