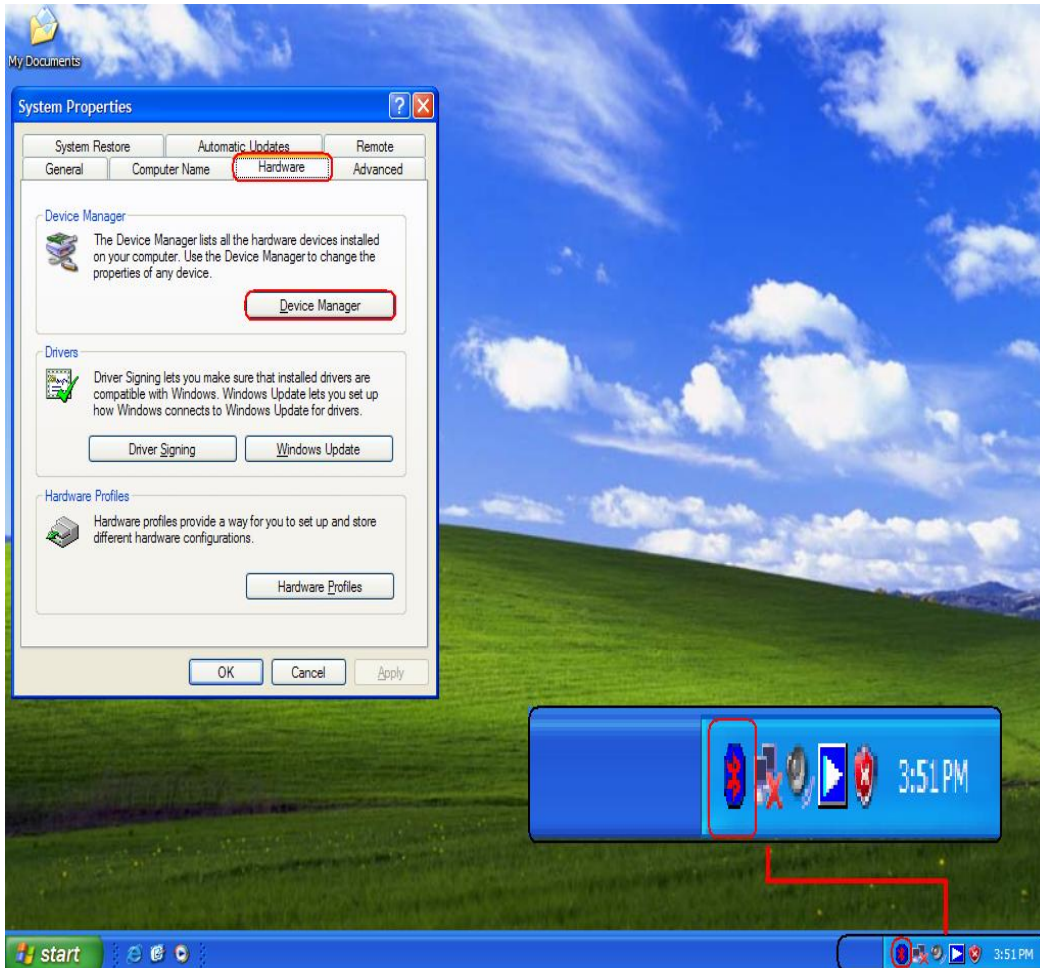
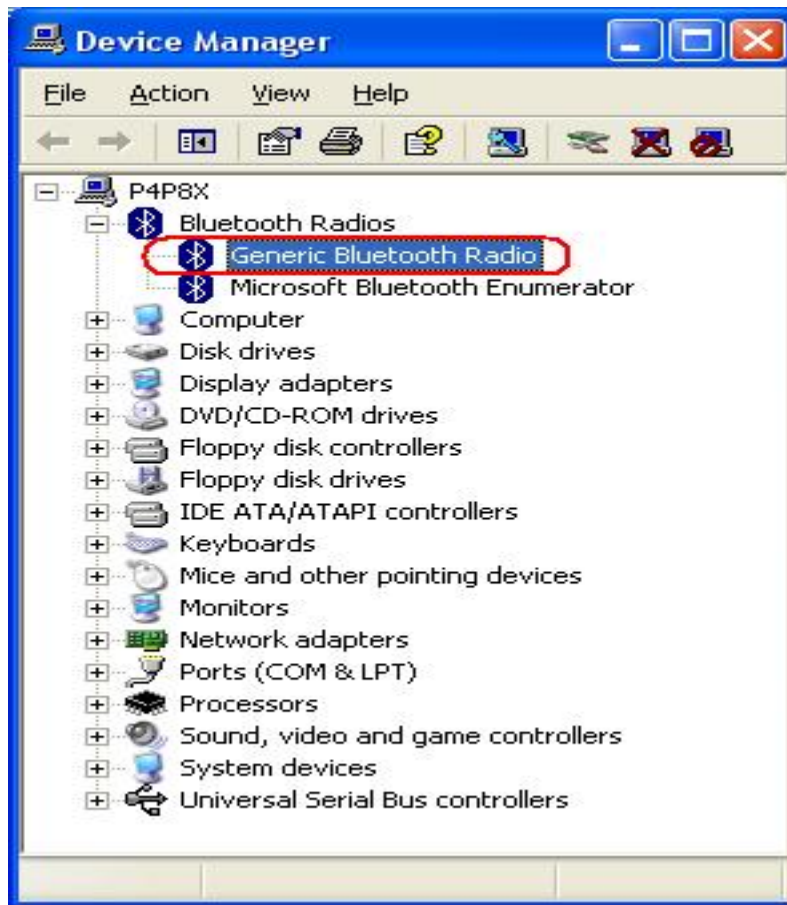


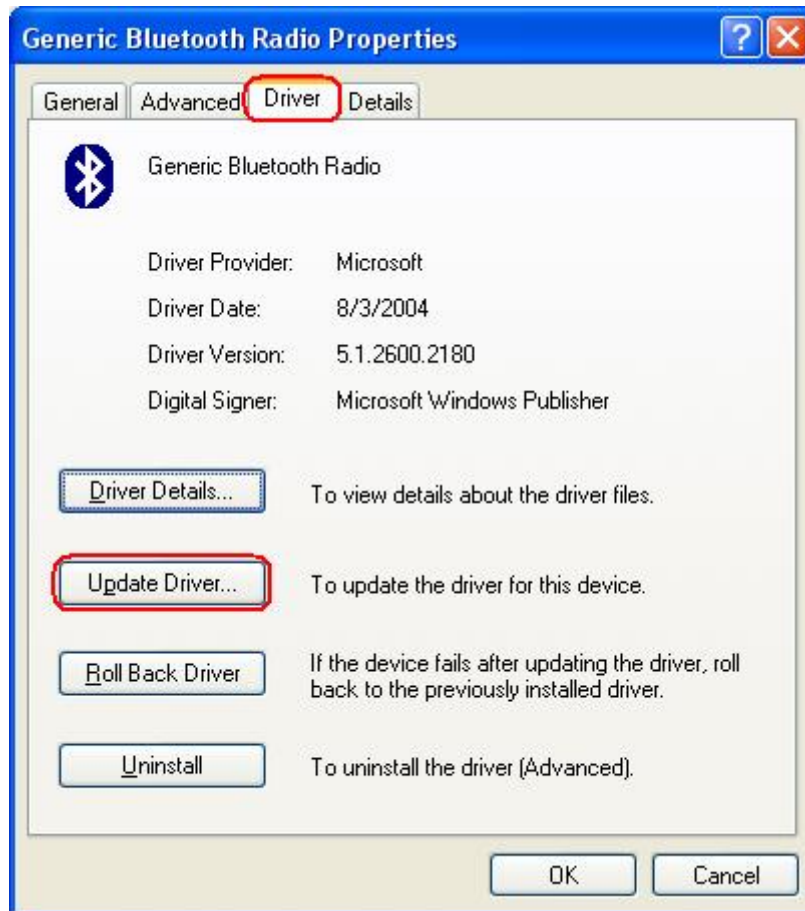
Here is how the Bluetooth Driver runs USB Adapter in the Windows XP SP2.



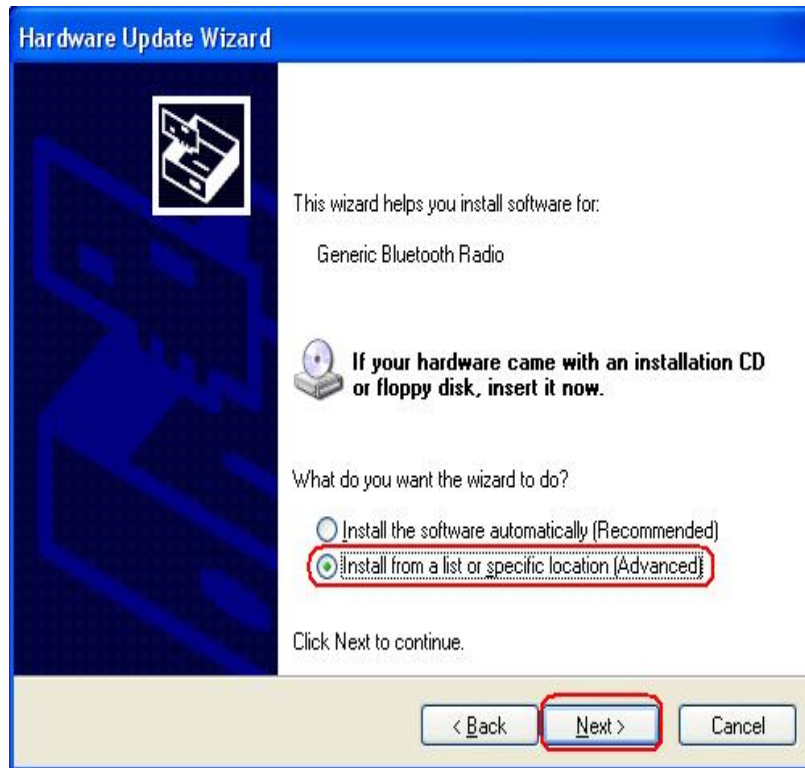
1. After the installation of the driver, plug the USB adapter into PC. Now, the USB Adapter is not to start working yet. (The red color of the Bluetooth Icon indicates that the Bluetooth device is not to start working.)



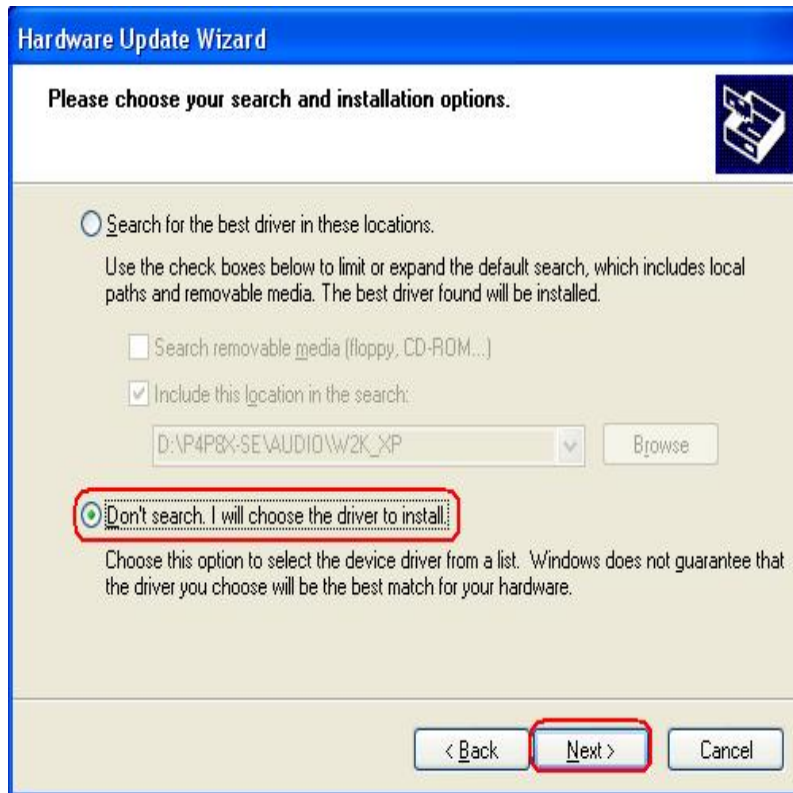
2. Choose Generic Bluetooth Radio beneath the Bluetooth Radios.



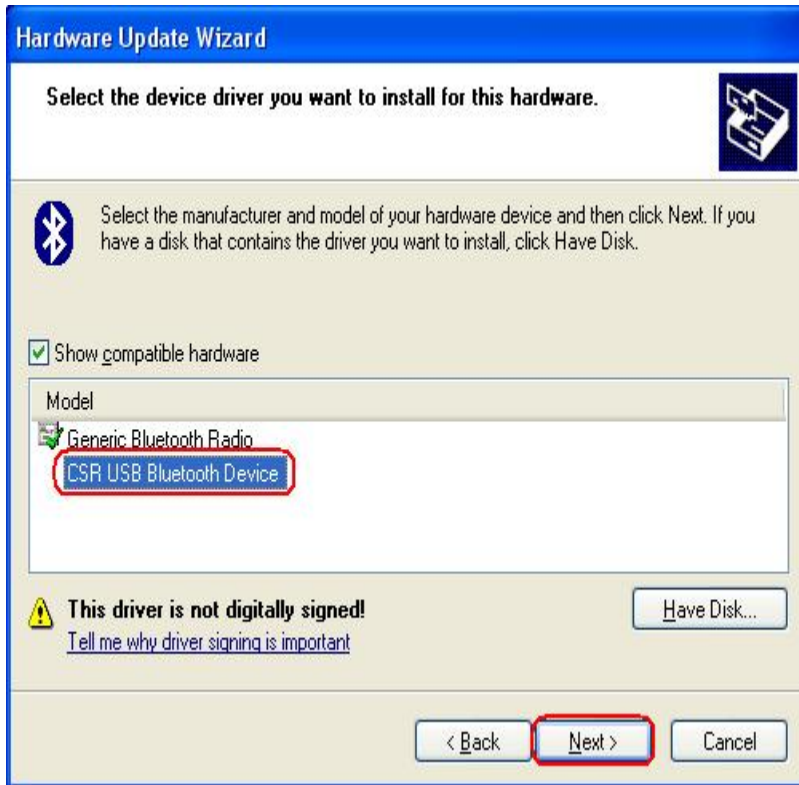
3. Choose Update Driver in Device icon.



4. Choose Install from a list or specific location (Advanced) and click next.



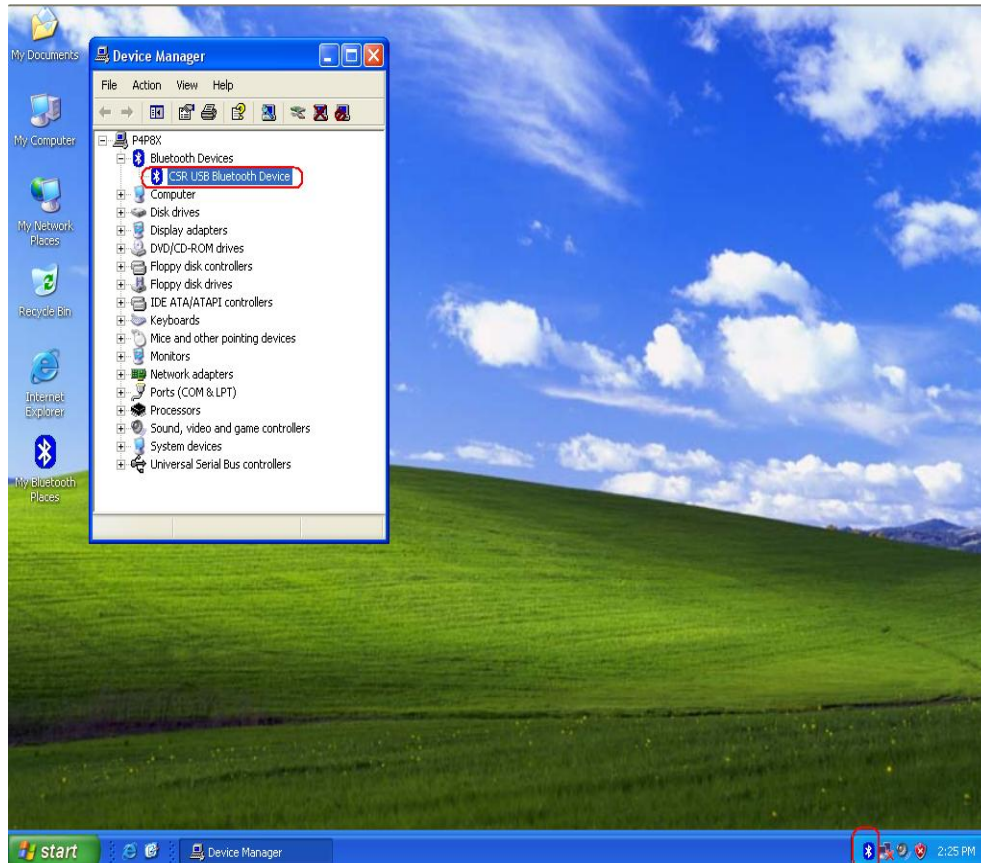
5. Choose Don't search. I will choose the driver to install and click Next.



6. Choose CSR USB Bluetooth Device and click Next.



7. Installation Finished.



8. Check CSR USB Bluetooth is beneath the Bluetooth Devices icon. If the Bluetooth Icon at the down-right side of the screen turns into White color, the USB Adapter is now working.