

## 1. Get the MAC address of the S.A.W.M. Switch

Before set up the S.A.W.M. switch, the first step is to get the MAC-address of the S.A.W.M. Switch, You can find it out from the label on the bottom of the Switch or you may visit Ethereal (<http://www.ethereal.com/>) – a network protocol analyzer to get the software.

## 2. Get BootP Turbo utility from Weird Solutions, Inc.

Connect to the internet, start up your browser and enter the Weird Solution website address (<http://www.weird-solutions.com/>) into your browser's address window. When the Weird Solutions home page opens, click "Download" (see figure 1)



**Weird Solutions**

Weird Solutions is recognized world-wide as a leader in network and boot management software. Our products combine rock-solid quality with high-performance designs, and prove themselves daily at thousands of locations around the globe.

**Address**  
Weird Solutions, Inc.  
Phone: +46 8 758 3700  
Fax: +46 8 758 3687  
e-mail [www@weird-solutions.com](mailto:www@weird-solutions.com)  
Enhagslingen 1B  
S-187 40 TABY  
SWEDEN

**Products**  
**Technical Support**  
**Download**  
**Order**  
**Success Stories**  
**Headlines**

**SIEMENS** customer support ▶  
**System Developer** info ▶

**Headlines**

**NEW!** Broadband Provisioner - high-speed DHCP, TFTP and Syslog for network providers [Read more](#)

**NEW!** Syslog Turbo with database engine [Read more](#)

**NEW!** TFTP Turbo 4.0 sets a new standard for performance [Read more](#)

© 2003 Weird Solutions, Inc. [Company info](#)

Figure 1: the website of Solutions

You should get into the download page of Weird Solutions. Please click on the platform of the BootP Turbo software of Standard Server Software section (see figure 2) to begin downloading the BootP Turbo installer.

**Note:**

Products and corporate names appearing in this instruction may or may not be registered trademarks or copyrights of their respective companies, and are used only for identification or explanation and to the owners' benefit, without intent to infringe.

Product	Platform	Description
DHCP Turbo version 3.0, build 1343	<a href="#">Windows XP/2000/NT</a> <a href="#">RedHat Linux 8.0 &amp; GUI</a> <a href="#">Mandrake Linux 9.0 &amp; GUI</a> <a href="#">Suse Linux 8.1/8.2/9.0 &amp; GUI</a> <a href="#">Linux Readme/linkfile</a>	Free-for personal use, supports 5 nodes. To test rule expressions and NIC auto-rebind, please download DHCP Broadband Component above.
TFTP Turbo <b>NEW!</b> version 4.0, build 1337	<a href="#">Windows XP/2000/NT EXE</a> <a href="#">RedHat Linux 8.0 &amp; GUI</a> <a href="#">Mandrake Linux 9.0 &amp; GUI</a> <a href="#">Suse Linux 8.1/8.2/9.0 &amp; GUI</a> <a href="#">Linux Readme/linkfile</a>	Free for personal use, supports 2 simultaneous connections. To evaluate automatic folder creation and NIC auto-rebinding, please download TFTP Broadband Component found above.  Previous v3.2: <a href="#">TFTP Turbo Std</a> <a href="#">TFTP Turbo Enterpr</a>
Syslog Turbo <b>NEW!</b> version 2.0, build 1331	<a href="#">Windows XP/2000/NT EXE</a> <a href="#">RedHat Linux 8.0 &amp; GUI</a> <a href="#">Mandrake Linux 9.0 &amp; GUI</a> <a href="#">Suse Linux 8.1/8.2/9.0 &amp; GUI</a> <a href="#">Linux Readme/linkfile</a>	Free for personal use, limited to accepting messages from one host only.
<b>BOOTP Turbo</b> version 1.2, build 1242	<a href="#">Windows XP/2000/NT EXE</a>	Free-for personal use version. Limited to 1 device registration. 1MB
DNS Turbo version 2.1, build 1251	(beta)	30 day trial. 1.40MB

Figure 2: The download section of Weird Solution’s website

### 3. PC Connecting to the S.A.W.M. Switch

### 4. Setting a fixed IP-address on your computer

When there’s no IP address assigned to your computer via DHCP server, you have to assign a fixed IP address to your computer under TCP/IP properties. You can choose to use 192.168.0.1 as the address for your computer, and set the subnet mask to 255.255.255.0 and the Default gateway to 192.168.0.1 (See Figure 3).

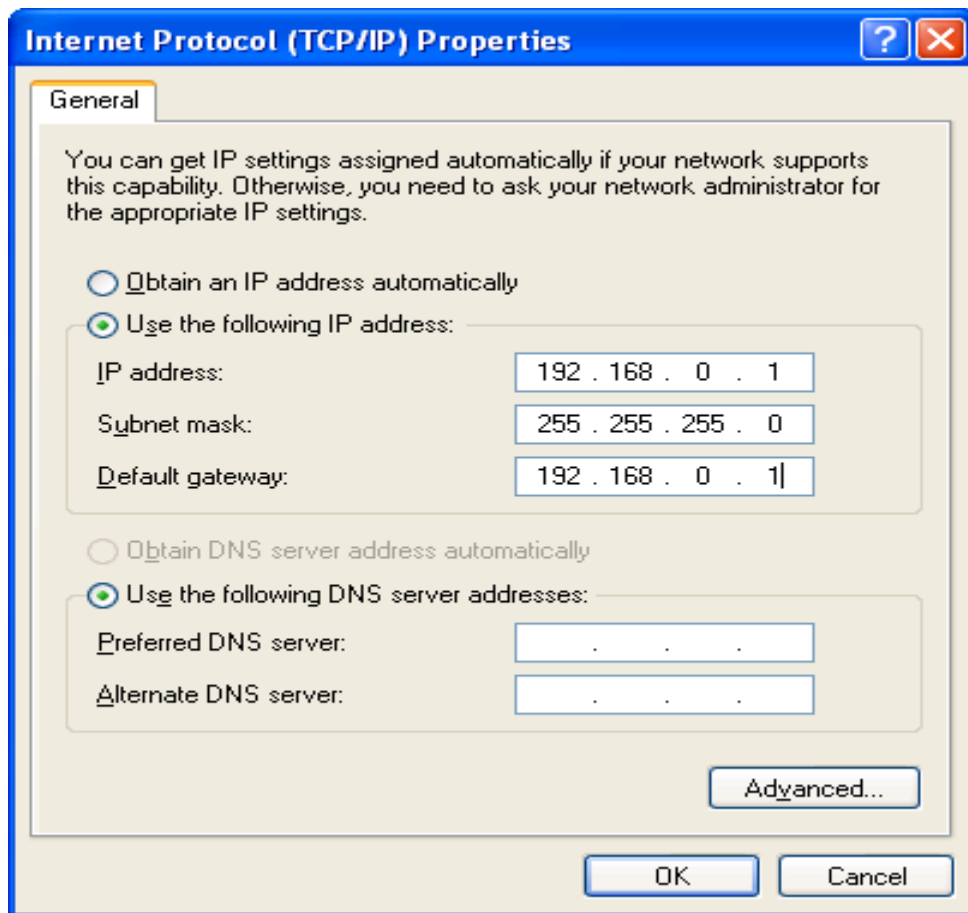


Figure 3: Snapshot of IP address assignment

## 5. Installing the BOOTP Turbo Utility

Double click the BPS.exe that you downloaded and begin installation; you will see as Figure 4:

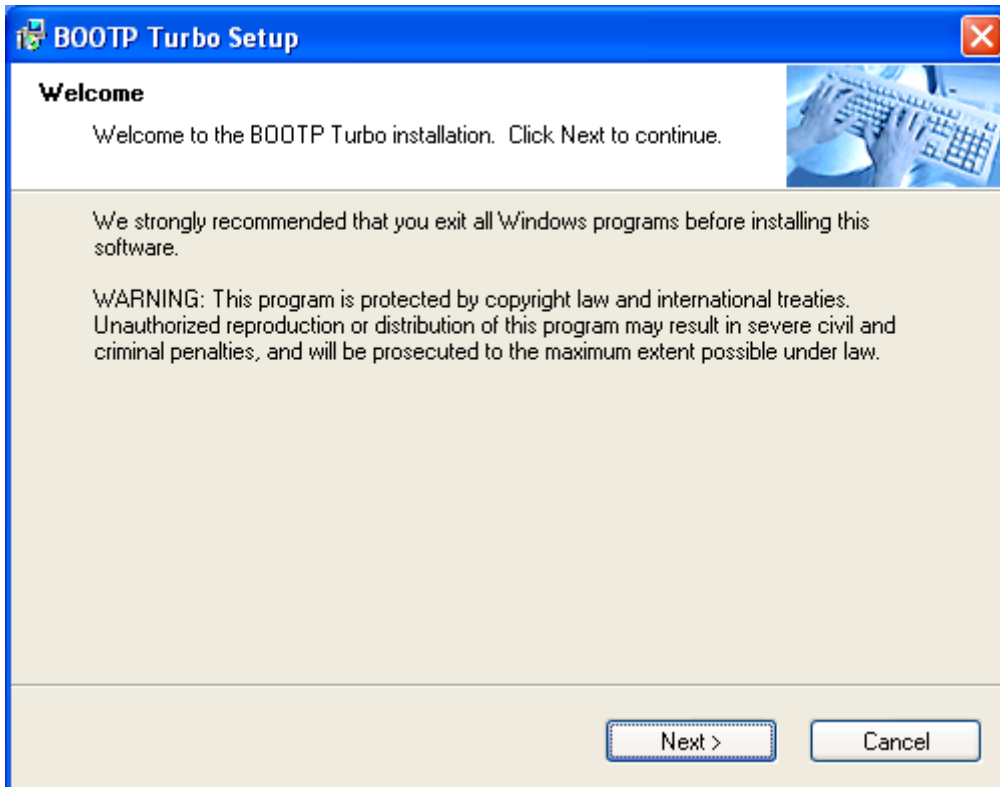


Figure 4

Click "Next"

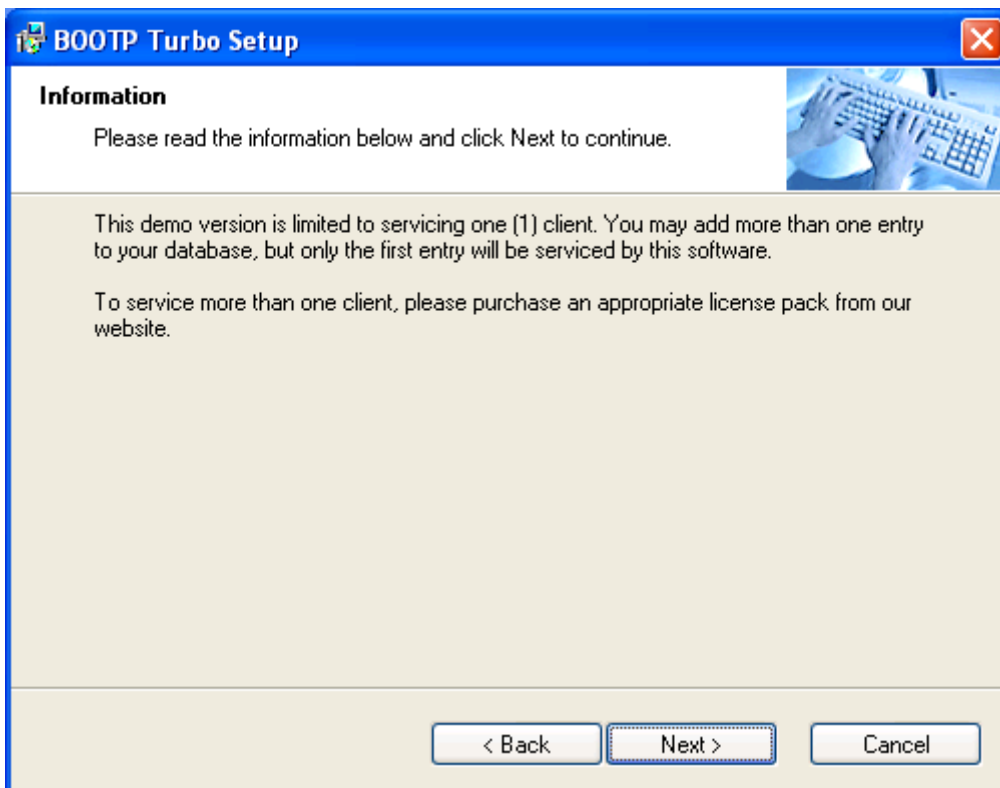


Figure 5

Click "Next"

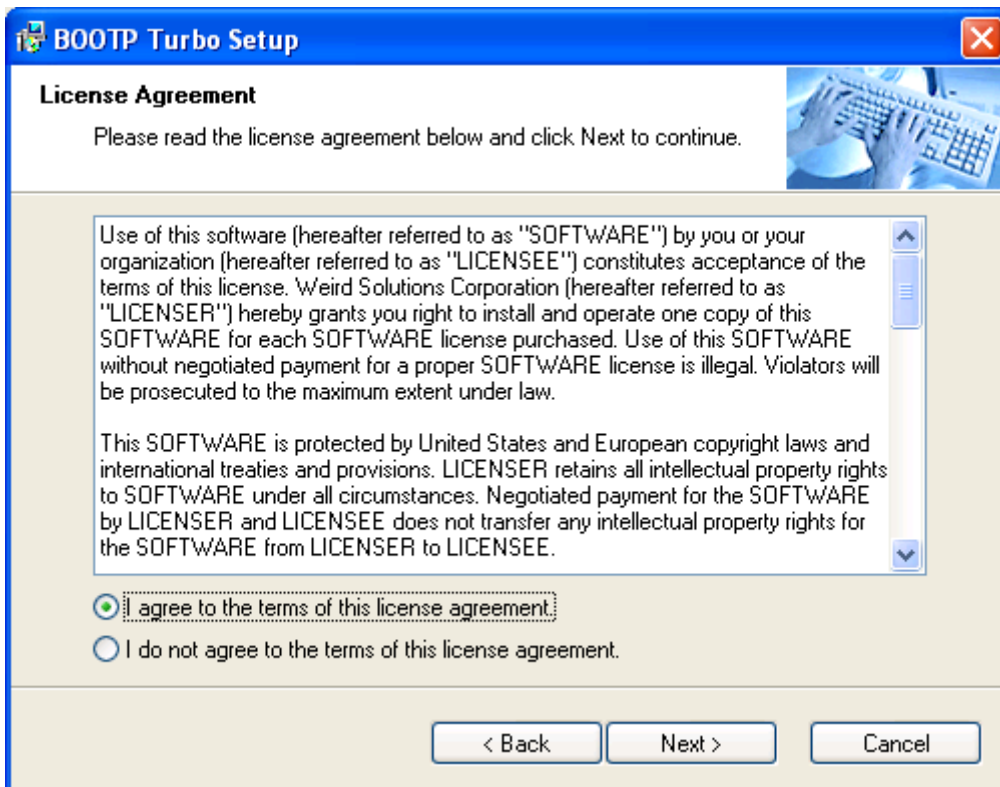


Figure 6

Select "I agree ..." and click "Next"

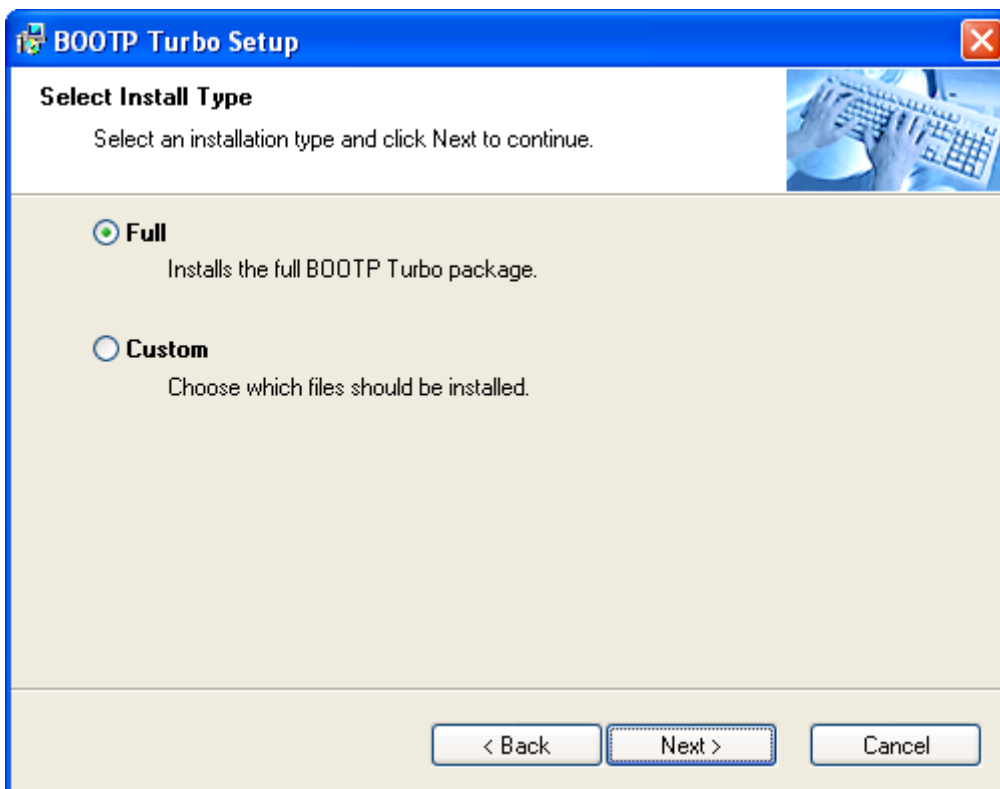


Figure 7

Select "Full" and click "Next"

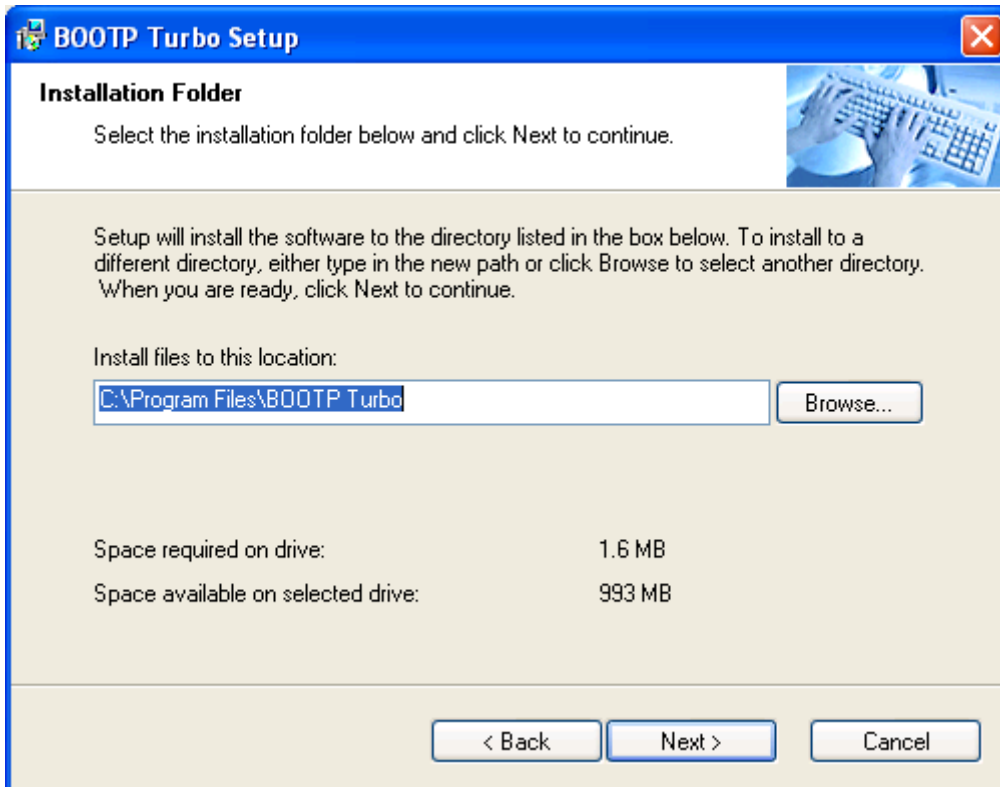


Figure 8

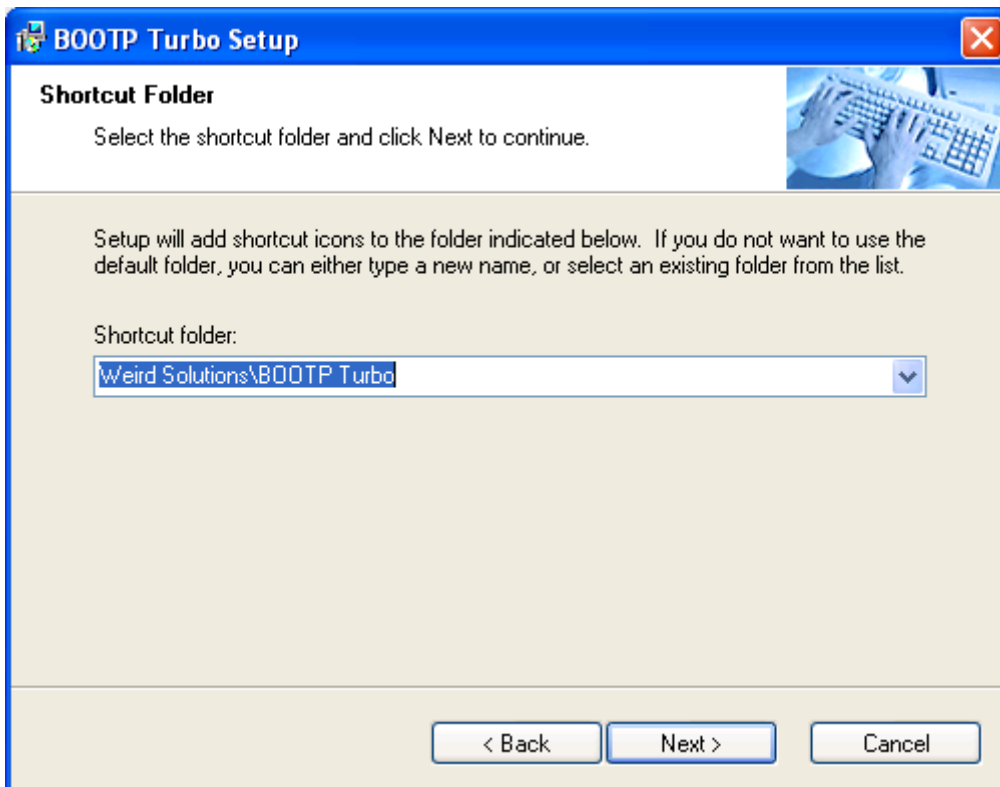
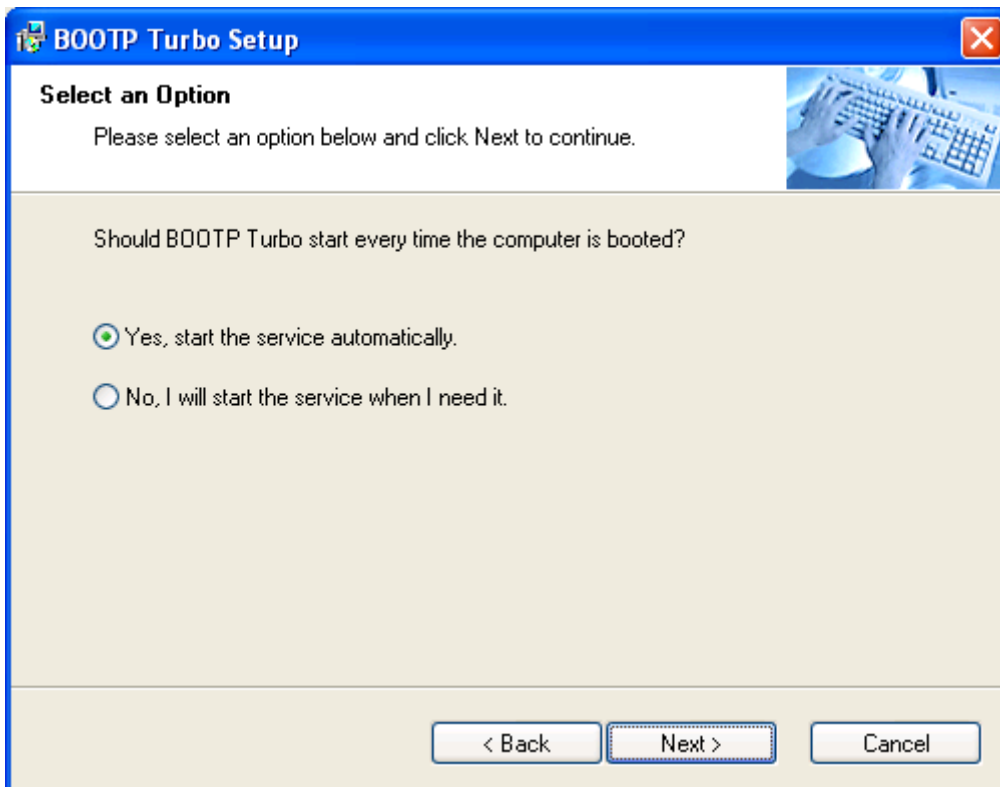
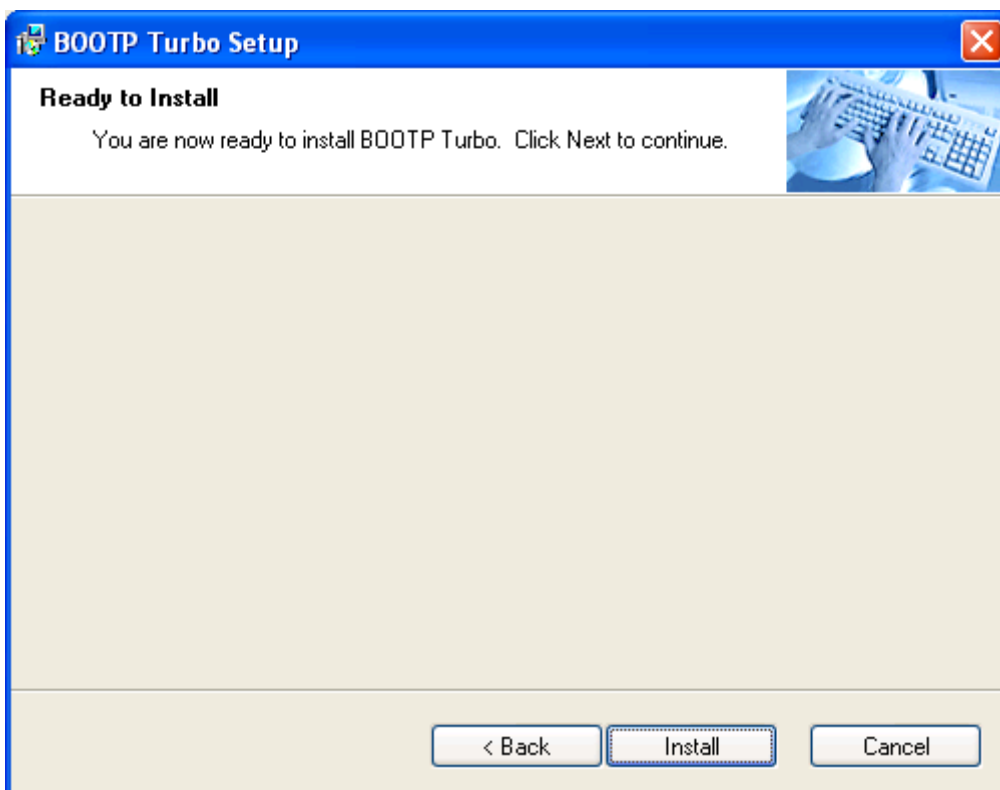


Figure 9



**Figure 10**

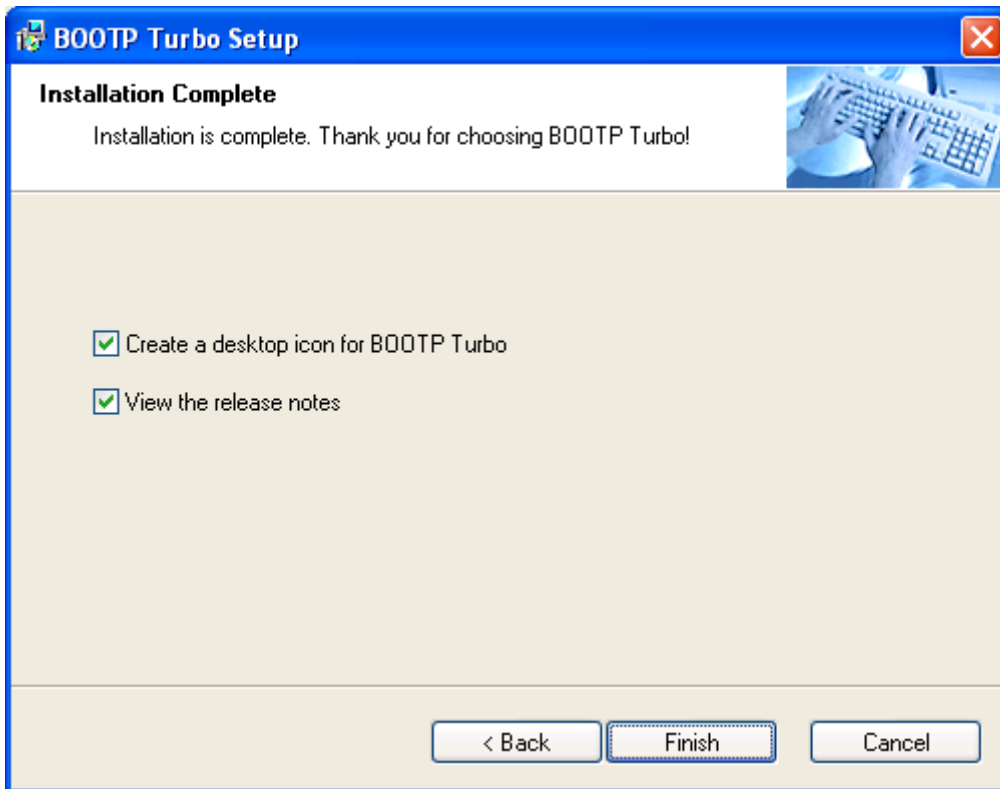
Follow the instructions and click "Next" at each step



**Figure 11**

Click "Install" and you will successfully install the software to your computer,

and after the installation is finished, you can see as Figure 12



**Figure 12**

**Uncheck** the “View the release notes” and click “Finish” button.

BooTP Turbo Utility will appear on your desktop when installation is completed.

## **6. Configuring the BooTP Turbo Utility**

Start-up the BooTP Turbo Utility by doubles clicking the icon on your desktop, and you will see as Figure13

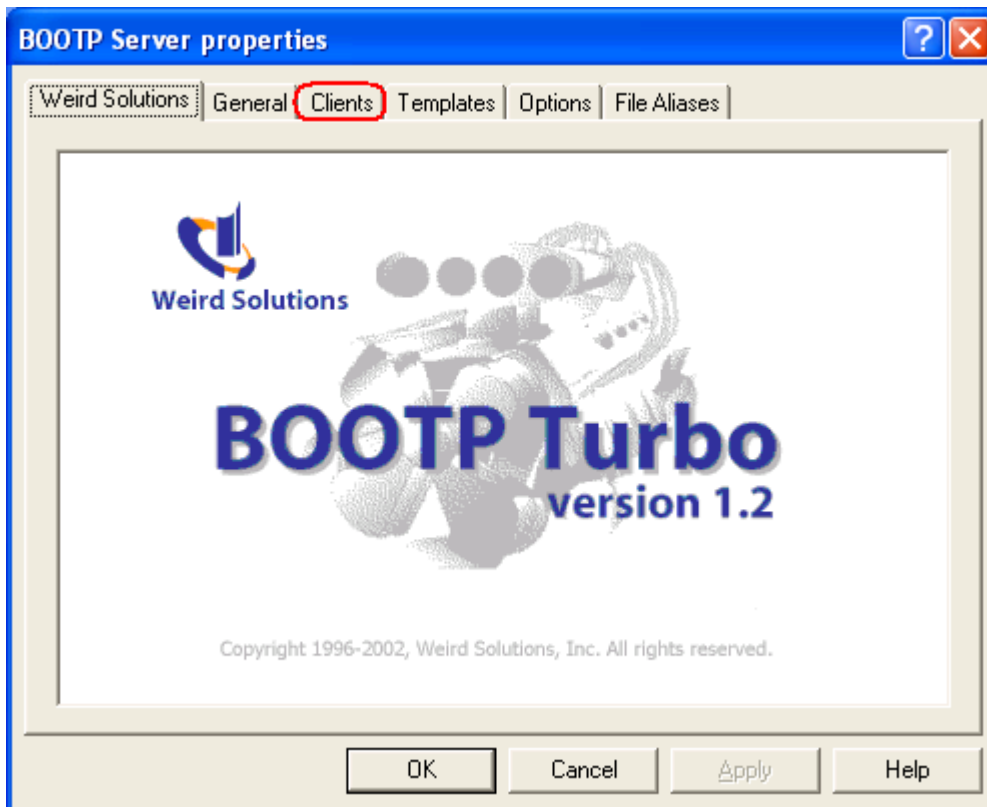


Figure 13: BooTP Turbo application window

Click "Clients"

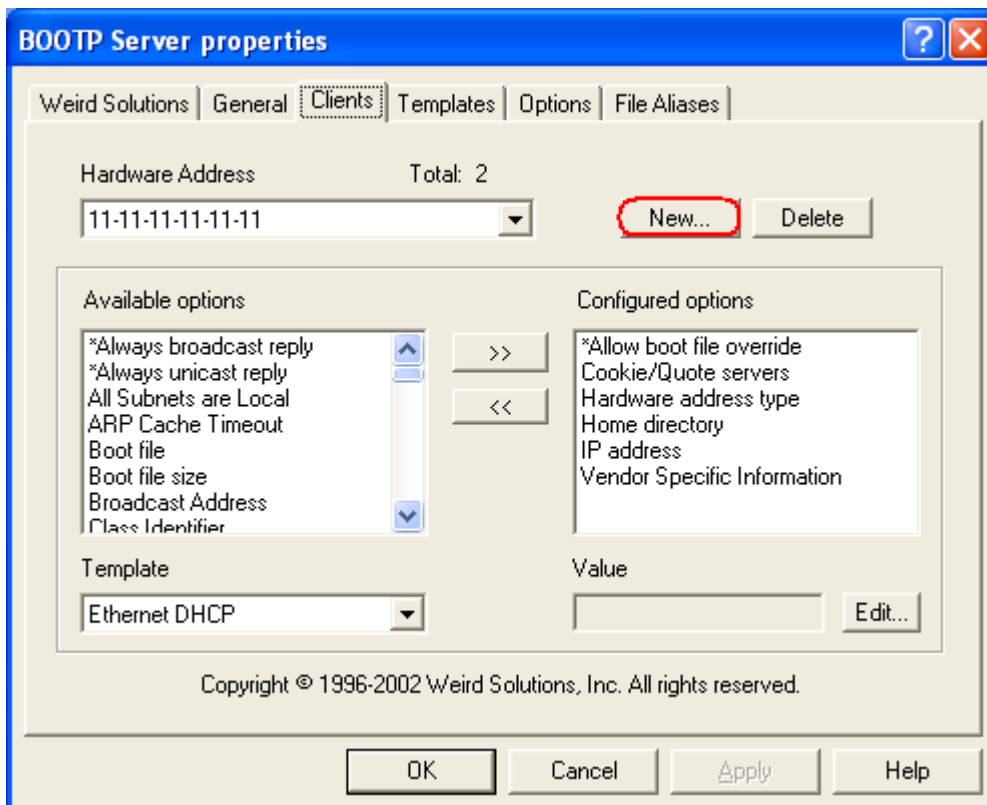


Figure 14: Clients tab

Click “New” as indicated in figure 14 and you will see the following dialog box:

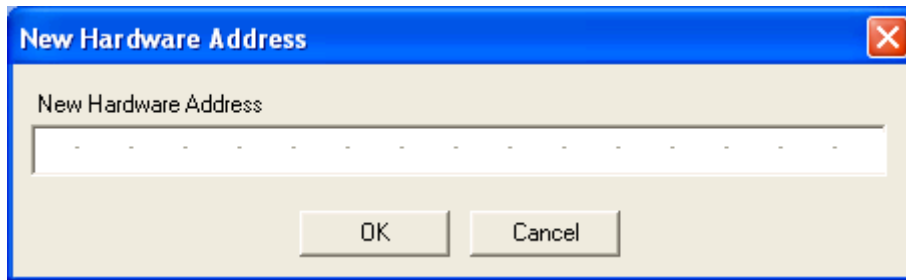


Figure 15

Please enter the MAC address of your S.A.W.M. Switch as shown in Figure 16.

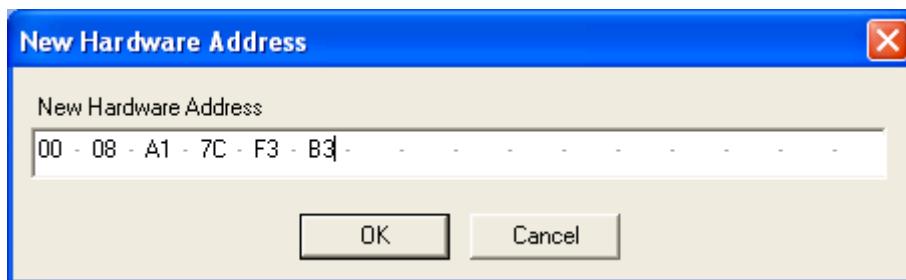


Figure 16

Click OK. The hardware address of your S.A.W.M. Switch is now adding to the drop-down list as shown in Figure 17.

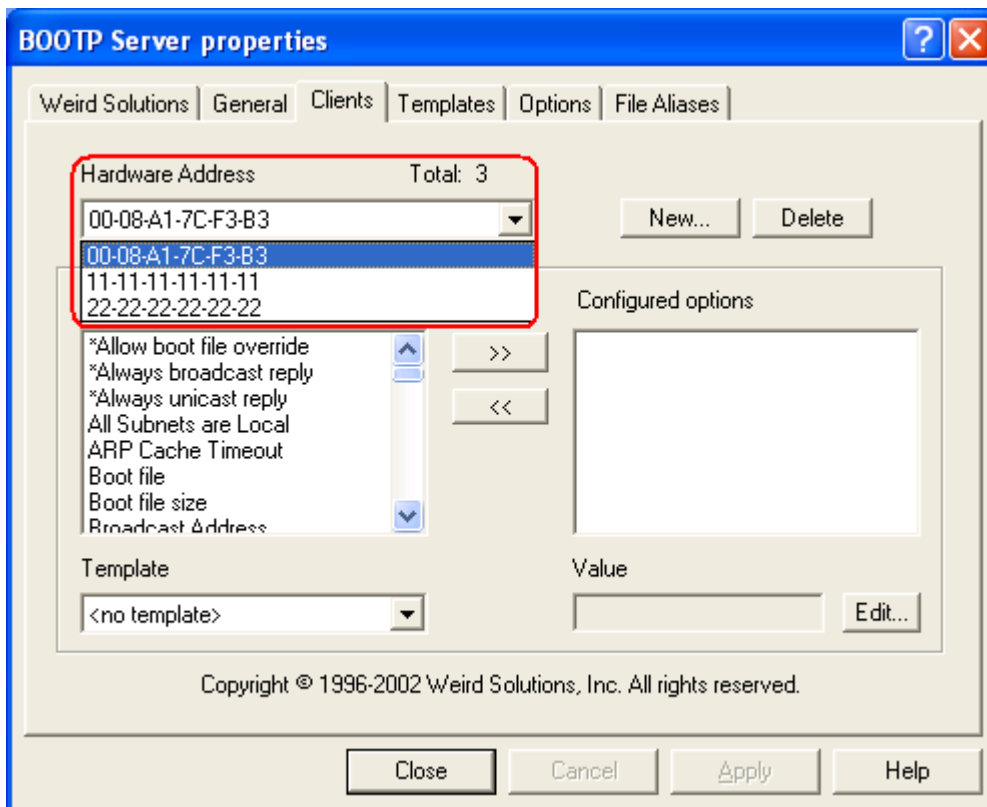
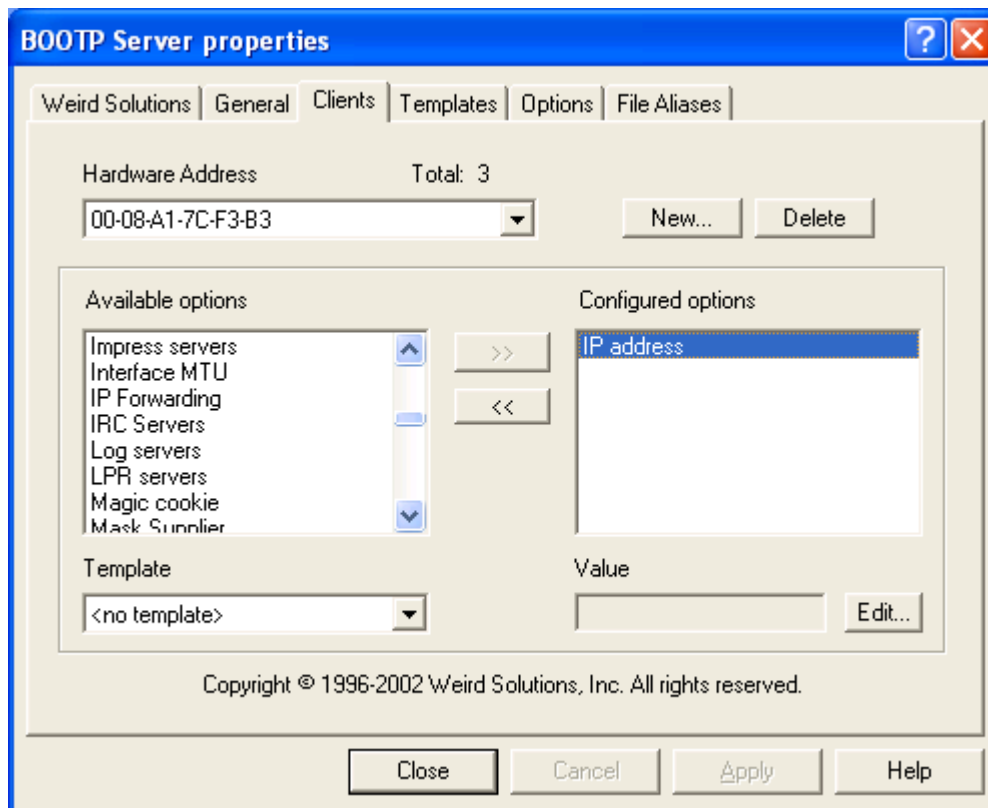


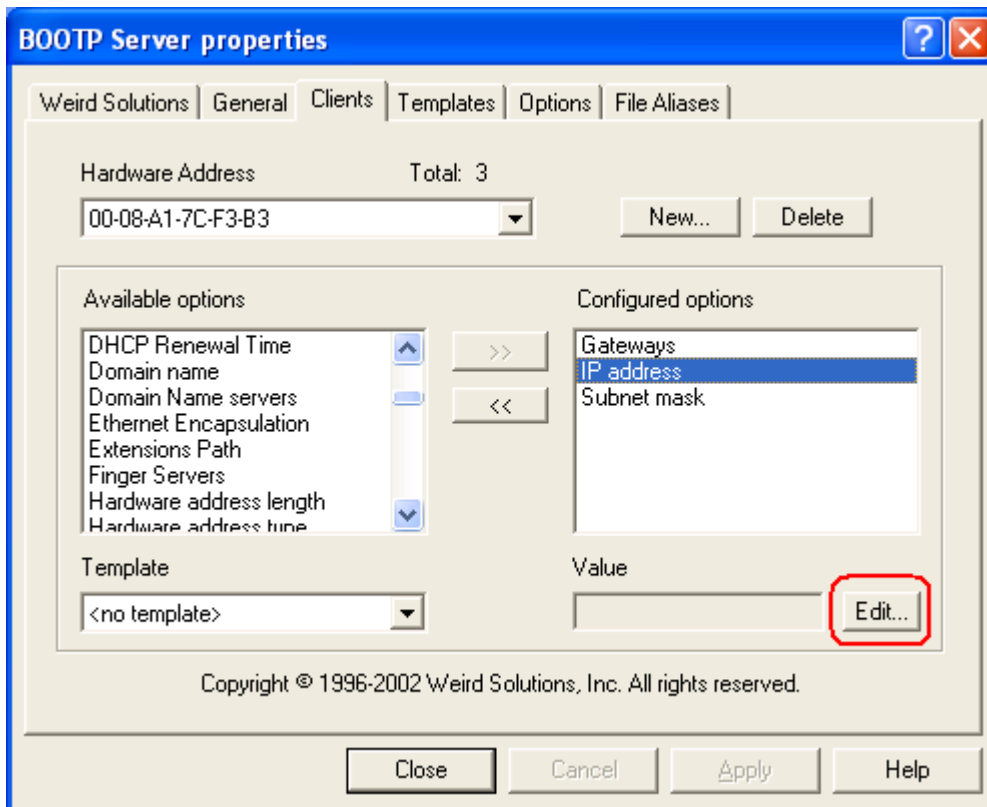
Figure 17

Choose the hardware address of your S.A.W.M. Switch from the drop-down list. Select IP address from the drop down list of Available options and also click “>>” button to the “Configured options” list, as shown in Figure 18.



**Figure 18**

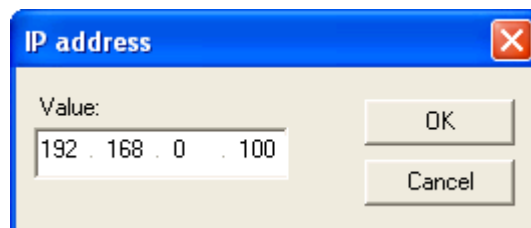
Please also add the “Gateways” and “Subnet mask” form the Available options list to the Configured options list. See Figure 19.



**Figure 19**

Select "IP address" from the "Configured options" list and click "Edit..." as indicated in Figure 19.

Please enter the IP address in the open out dialog box. You must assign one IP address, 192.168.0.100, to the S.A.W.M switch, as shown in Figure 20.



**Figure 20**

Click "OK" and you will see the new setting Value of IP address as shown in Figure 21.

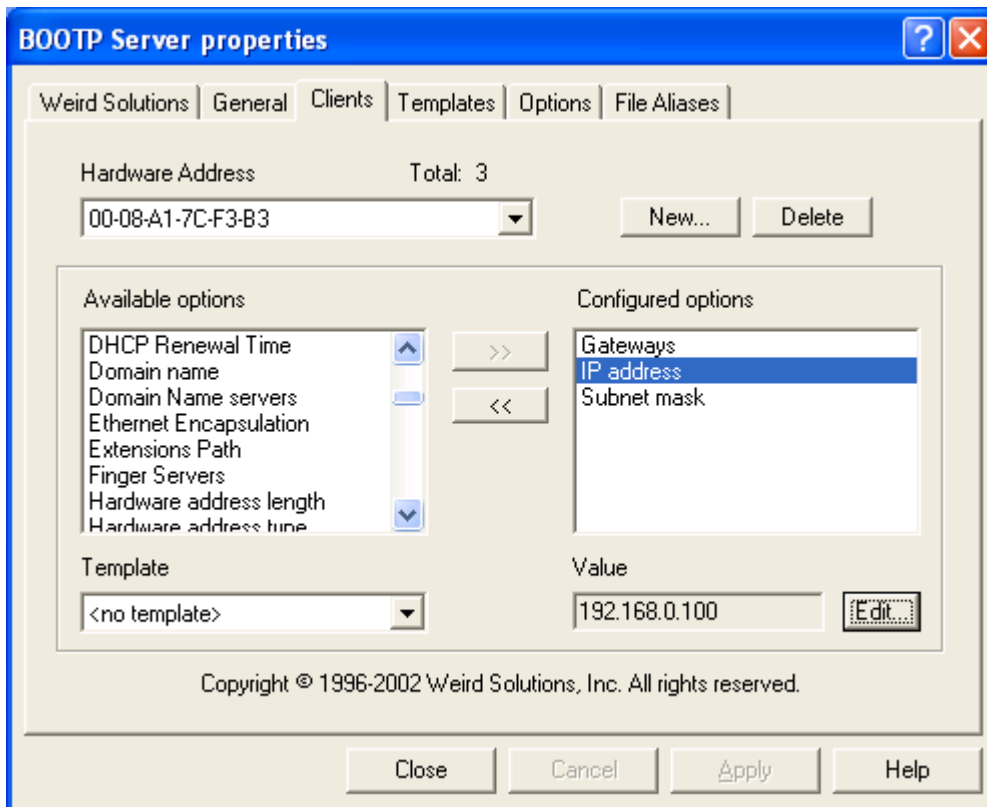


Figure 21

Repeat the steps to assign a value for the “Gateways” and “Subnet mask” from the Configured options.

For the “Gateways”, enter **192.168.0.1** to the “Address to add” and click “Add>>”. It will appear on the right side list and click “OK”. (Figure 22)

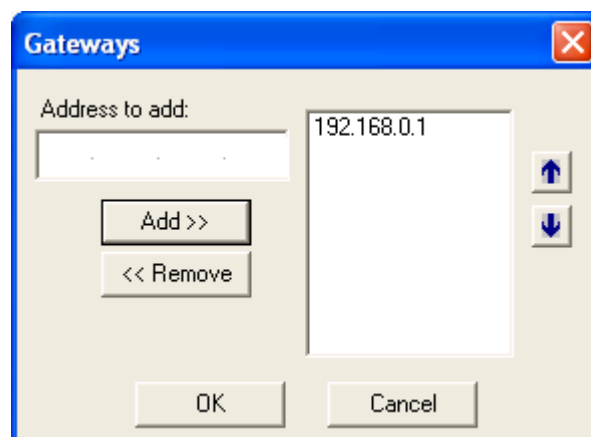


Figure 22

For the “Subnet mask”, you can name the value to **255.255.255.0**. Repeat the above step.

## 7. Restarting the computer

Restart the computer to ensure that the BooTP Turbo service starts with the right parameters and operates correctly.

## 8. Restarting the S.A.W.M. Switch

After restart the computer, you can open the Control panel, Administrative tools, Services to check the BooTP Turbo service is running or not. Next, please unplugging the power cord from the S.A.W.M. Switch and wait for one minute then plug into the power cord again.

You must wait a few minutes to restart the S.A.W.M. Switch (about 2 minutes), then open Internet Explorer browser and entering the IP address, **192.168.0.100** in address field of browser. Accessing the web based management settings of the S.A.W.M. Switch will require you to enter a username and password. Check your manufacturer's documentation and enter the required default password.