

CWR-854

Wireless-G Router

Quick Installation Guide

Requirements


The following components are needed to setup the wireless router:

- A computer with a wired or a wireless network card
- Broadband Internet access
- Ethernet cables
- Wireless adapter (optional)

Connecting the Wireless Router

1. Before configuring the router, users must obtain certain information (like the type of connection, is it dynamic or fixed IP, is it PPPoE, user name and password for PPPoE connections) from their ISP.
2. Turn off all network devices. This includes your computer. The wireless router and the cable / DSL modem (if applicable).
3. Connect the **WAN** port of this wireless router to a cable / DSL modem or switch.
4. Connect one of the LAN ports (labeled 1 to 4) on the wire less router to an Ethernet port on a computer. Repeat this step to connect other computer(s).
5. Connect the power port on the wireless router to an electrical source.

Use only the included power adapter

6. Turn on all connected devices. These include the com puter, modem / switch and the wireless router.
7. When the wireless router is turned on, the PWR  LED will turn on also. The **WLAN** LED turns on when the system test is successful and the wireless interface is ready. A LAN LED turns on when the corresponding LAN port is connected.

Setting Up Your Computer

This section shows you how to configure your computer to obtain an IP address from the wireless router. This ensures that your computer can communicate with the wireless router.

Steps are shown for Windows 2000 or XP in classic mode (with the same look and feel as the previous Windows versions). For other Windows versions, refer to the User's Guide.

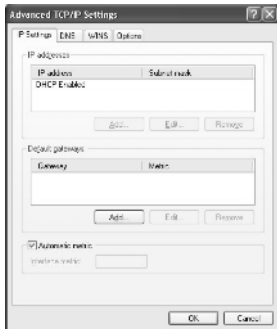
1. Click **Start > Settings > Control Panel**. And double-click on **Network and Dial-up Connections** or **Network Settings**.
2. Select the **Local Network Connection** icon for the appropriate network card. Right-click and select **Properties**.
3. Select **TCP/IP** and click **Properties**.



4. In the screen that displays, select **Obtain an IP address automatically**.



5. Click **Advanced** and remove all gateway information and click **OK**.

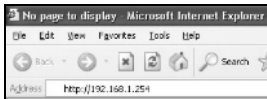


6. Click **OK** to close the screen and restart the computer when prompted.

Configuring the Wireless Router

These steps show you how to configure the wireless router using the **Setup Wizard**.

1. Make sure the computer is connected to one of the LAN ports on the wireless router.
2. Open a web browser and enter **http://192.168.1.254** in the address bar and press Enter.
3. The router will not request the account and password when first log-in.
4. The main **Setup Wizard** screen displays. Click **Next>>** to continue.



A screenshot of the CNet CWR-854 Wireless-G Router Setup Wizard web interface. The page has a blue header with the CNet logo and "CWR-854 WIRELESS-G ROUTER". A left sidebar lists site contents: Setup Wizard, Operation Mode, Wireless, TCP/IP Settings, Firewall, and Management. The main content area is titled "Setup Wizard" and contains the following text: "The setup wizard will guide you to configure access point for first time. Please follow the setup wizard step by step." Below this is a "Welcome to Setup Wizard." message and a list of steps: 1. Setup Operation Mode, 2. Choose your Time Zone, 3. Setup LAN Interface, 4. Setup WAN Interface, 5. Wireless LAN Setting, 6. Wireless Security Setting. A "Next>>" button is located at the bottom right of the page.

5. In the first wizard screen, select the operation mode to allow the wireless router to configure the WAN interface to be wire (**Gateway or Bridge**) or wireless (**Wireless ISP**) connection. For general ISP, please select **Gateway**. Click **Next>>**.



6. You can enable NTP (Network Time Protocol) to allow the wireless router to automatically update the system time. Click **Next>>**



7. You can change the LAN interface settings in the second wizard screen. Click **Next>>**.



8. The third wizard screen varies depending on the type of Internet connection you select.

DHCP Client:

Select this option if your ISP does not give you an IP address or account user name information.



Static IP: Select this option if your ISP gives you a fixed WAN IP address. Complete this screen with the information provided by your ISP.

The screenshot shows the configuration page for a CNet CWR-854 Wireless G Router. The page title is "WAN Access type". On the left is a navigation menu with the following items: Home, Contents, Setup Wizard, Operation Mode, Wireless, LAN Settings, LAN Interface, WAN Interface, Forward, Management, and Logout. The "WAN Interface" item is selected. The main content area contains the following fields and options:

- WAN Access Type:** Static IP (selected)
- IP Address:** 192.72.53.80
- Subnet Mask:** 255.255.255.0
- Default Gateway:** 192.72.53.9
- MTU Size:** 1500 (range 1400-1500 bytes)
- DNS 1:** 192.72.53.7
- DNS 2:** 168.95.1.1
- DNS 3:** (empty)
- Clone MAC Address:** 000000000000
- Enable uPNP
- Enable Ping Access on WAN
- Enable Web Server Access on WAN
- Enable IPsec pass through on VPN connection
- Enable PPTP pass through on VPN connection
- Enable L2TP pass through on VPN connection

At the bottom of the form are two buttons: "Apply Changes" and "Reset".

PPPoE: Select this option if you are connecting through PPPoE. Enter the Internet access account user name and password.

WAN Interface Setup

This page is used to configure the parameters for Internet service which connects to the WAN port of your Access Point. Here you may change the access method to static IP, DHCP, PPPoE or PPTP by click the item value of WAN Access type.

WAN Access Type: PPPoE

User Name:

Password:

Service Name:

Connection Type:

Idle Time: (0-1000 seconds)

MTU Size: (300-1492 bytes)

Obtain DNS Automatically

Set DNS Manually

DNS 1:

DNS 2:

DNS 3:

Clone MAC Address:

Enable uPnP

Enable Ping Access on WAN

Enable Web Server Access on WAN

Enable IPsec pass through on VPN connection

Enable PPTP pass through on VPN connection

Enable L2TP pass through on VPN connection

PPTP: This connection type is available in Europe. Select this option if you are connecting through PPTP. Enter the information as provided by your ISP.

WAN Interface Setup

This page is used to configure the parameters for Internet network which connects to the WAN port of your Access Point. Here you may change the access method to static IP, DHCP, PPTP or PPTP by click the item value of WAN Access type.

WAN Access Type: PPTP

IP Address: 0.0.0.0

Subnet Mask: 0.0.0.0

Server IP Address: 0.0.0.0

Gateway IP Address: 0.0.0.0

User Name:

Password:

MTU Size: 0 (0-1460 bytes)

Request MPPE Encryption

Obtain DNS Automatically

Set DNS Manually

DNS 1:

DNS 2:

DNS 3:

Clone MAC Address: 000000000000

Enable rFNP

Enable Ping Access on WAN

Enable Web Server Access on WAN

Enable IPsec pass through on VPN connection

Enable PPTP pass through on VPN connection

Enable L2TP pass through on VPN connection

Apply Changes Reset

9. Configure wireless LAN settings in the last wizard screen.

Band: Select **802.11 B** if you only have 802.11b wireless devices. Select **802.11 G** if you have only 802.11g wireless devices. Otherwise, select **802.11 B/G**.

5. Wireless Basic Settings

This page is used to configure the parameters for wireless LAN client which has connected to your Access Point.

Name: 001111111111

Mode: 2G

Network type: 802.11b/g/n

SSID: Default SSID

Channel Number: 11

Enable Mac Clone (Single Ethernet Client)

Enable Unchannel Repetition Mode

SSID of Extended Interface:

Cancel << Back Forward >>

Mode: The default setting of **AP** (Access Point) allows this wireless router to bridge the wired and wireless networks. Select **Client** to use this wireless router as a wireless adapter for a computer. Select **WDS** (Wireless Distributed System) to wirelessly bridge two wired networks. To set this wireless router to function as an AP and bridge simultaneously, select **AP+WDS**.

Network Type: In **Client** mode, select **Infrastructure** to connect to any wireless network. Otherwise select **Ad-hoc** to connect to another wireless device.

SSID: Specify the name of a wireless network. All points in the same wireless network must have the same SSID.

Channel Number: Select the appropriate channel in which all wireless devices broadcast in the same wireless network.

Enable Mac Clone: In **Client** mode, select this option to copy the MAC address of a computer. All packets transmitted wirelessly will use this MAC address. This is for added security.

Click **Finished** to complete the wizard setup. The wireless router will reboot to make the changes take effect.

If you have changed the LAN IP address of the wireless router in *Step 7*, you need to use the new IP address to access the wireless router again.

10. Test your Internet connection. From any connected computer, open a web browser and enter <http://www.cnet.com.tw>.

**For advanced setup information, please refer
to the User's Guide.**

Troubleshooting

1. None of the LEDs turn on when I connect the power.
 - Make sure the power source is turned on.
 - Use only the included power adapter. Using a different power adapter will damage the wireless router.
2. I cannot connect to the wireless router.
 - Make sure the wireless router is turned on.
 - Check the cable connections. An Ethernet connection should not be

longer than 100 meters.

- Make sure the IP addresses of your computer and the wireless router are in the same range. Set your computer to receive an IP address from the wireless router (refer to *Section B* or the User's Guide).

3. I cannot connect to the Internet through the wireless router.

- Make sure the modem is turned on.
- Check the cable connection. An Ethernet connection should not be longer than 100 meters.
- Check your Internet settings in the Wizard Setup screen. For PPPoE and PPTP connection types, the username and passwords are case-sensitive.