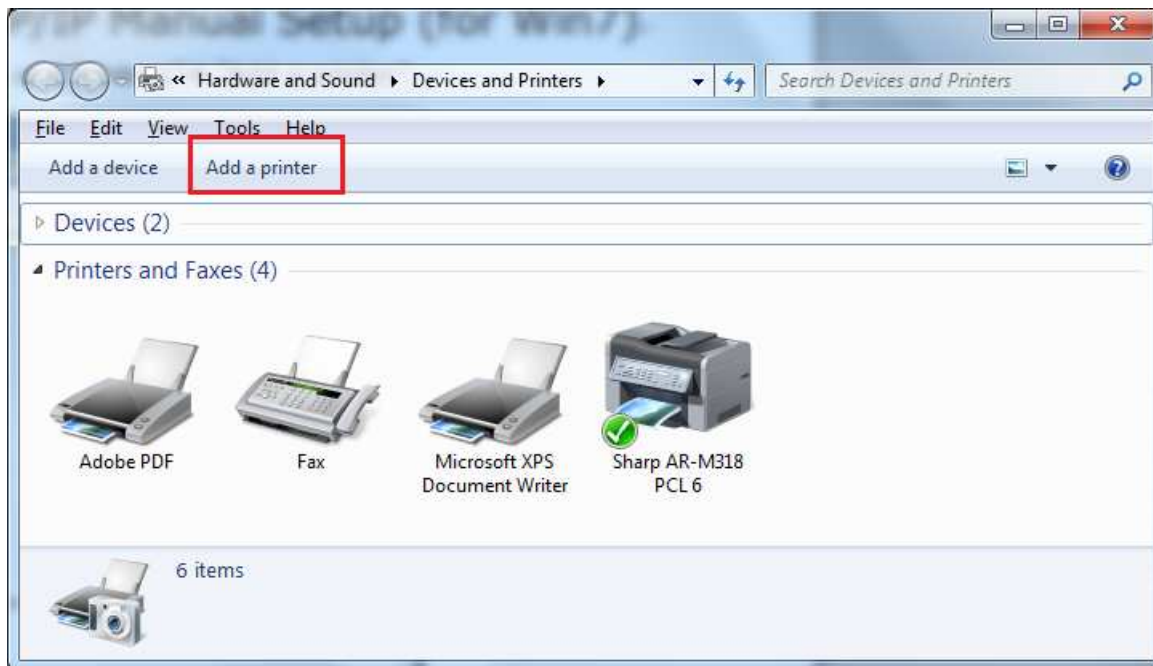
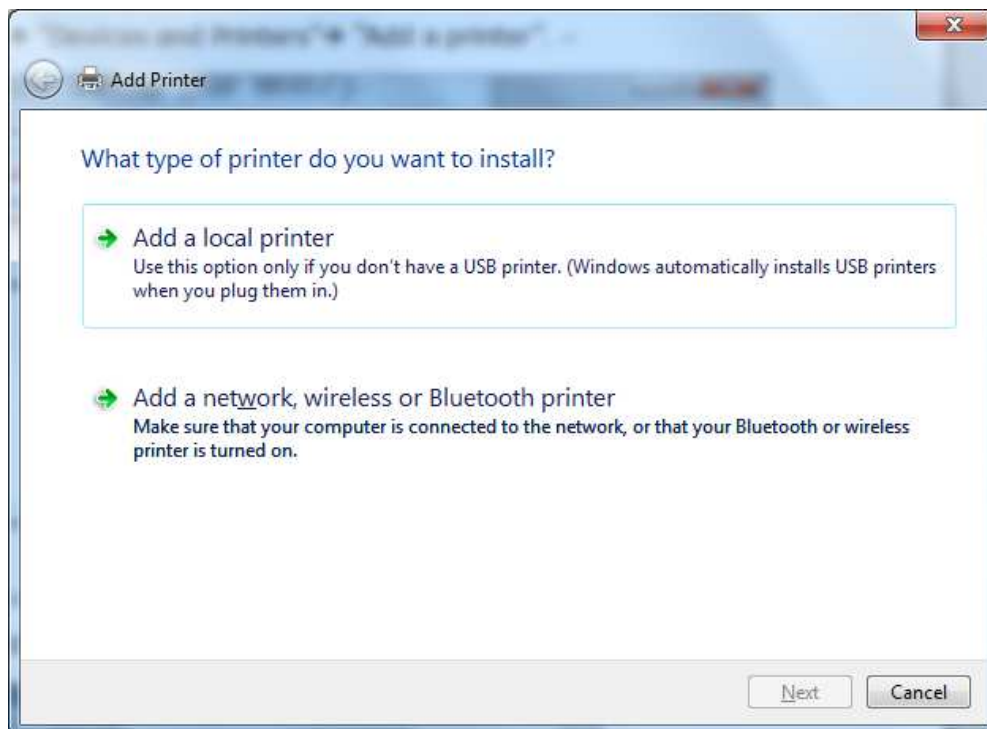


# 1.1 Standard TCP/IP Manual Setup (for Win7)

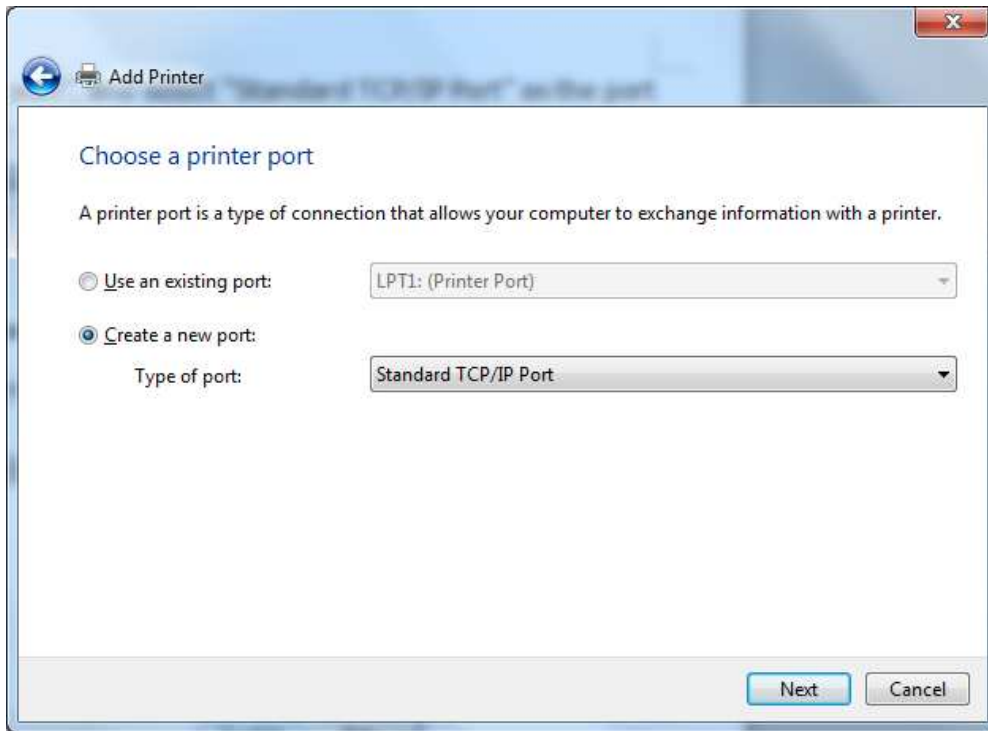
1.1.1 Select Start → "Devices and Printers" → "Add a printer".



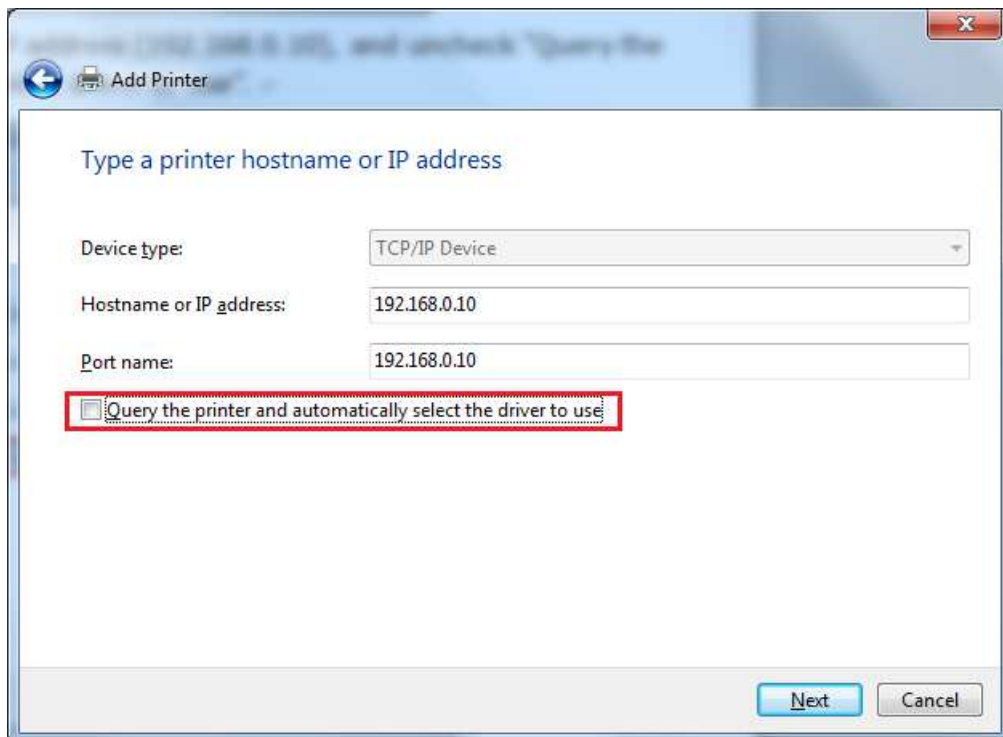
1.1.2 Select "Add a local printer".



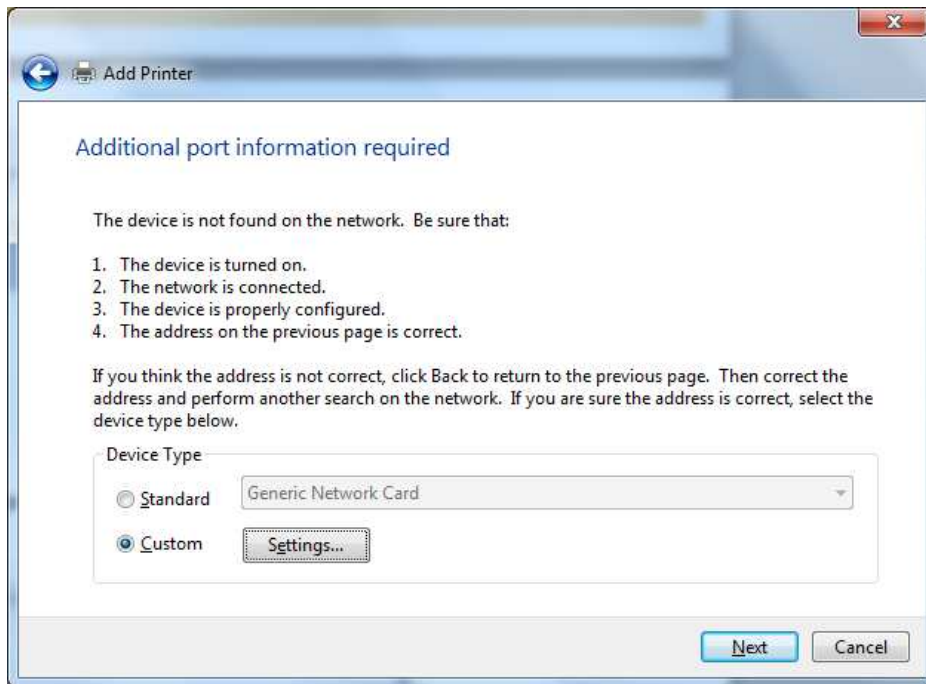
1.1.3 Please select "Create a new port", and select "Standard TCP/IP Port" as the port type, and then click "Next".



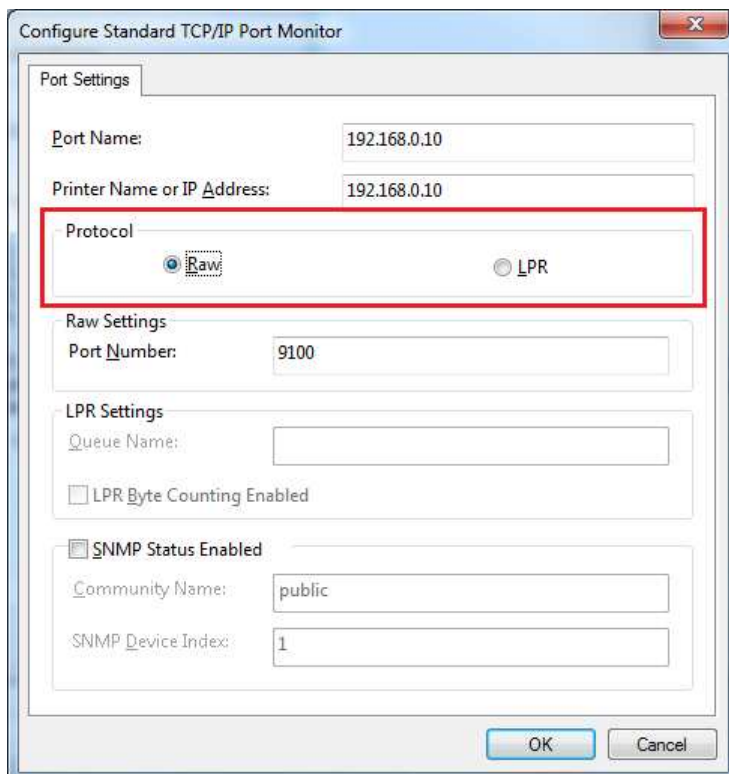
1.1.4 Please type a print server IP address (192.168.0.10), and uncheck "Query the printer and automatically select driver to use".



1.1.5 Please select "Custom" in the Device type, and click "Settings...".

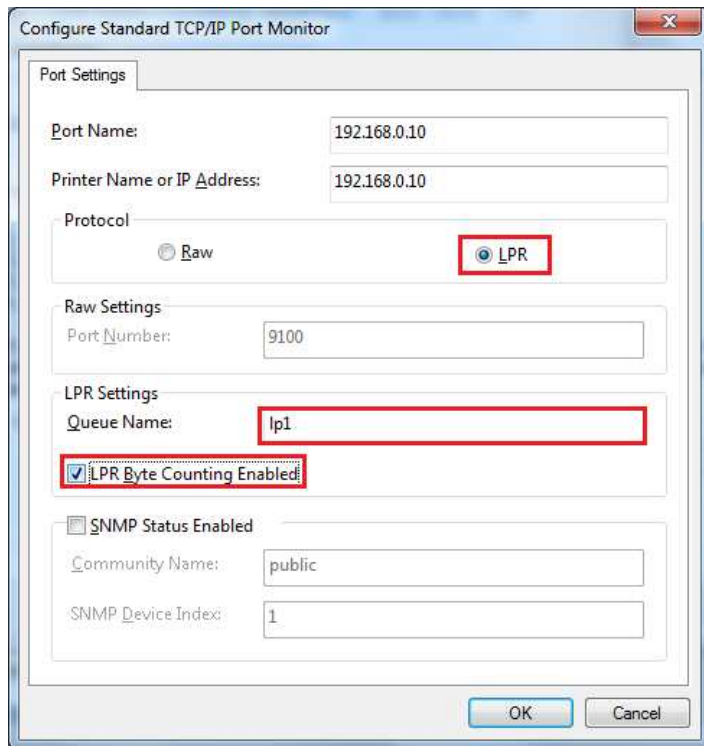


1.1.6 The window of "Configure Standard TCP/IP Port Monitor" will display. In the blanket of "Protocol", you can select "Raw" or "LPR". The follow figure is the Raw settings. **We recommend you to select the LPR protocol.**

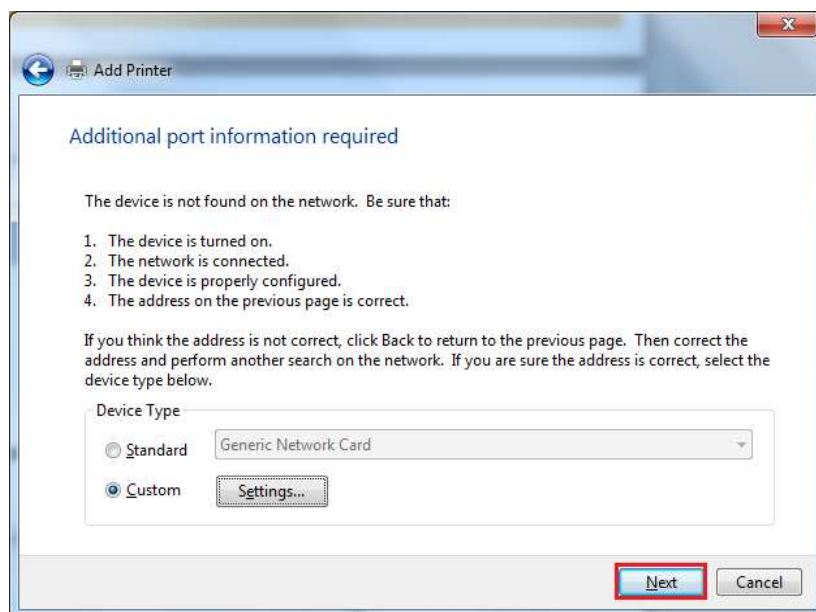


# LPR protocol printing method

1.1.7 Please select "LPR" in the blanket of "Protocol". Enter the default port name "lp1" in "Queue name:." Check "LPR byte counting enabled", and click "OK" to close the window.



1.1.8 Return to the window of "Additional port information required", and click "Next".



1.1.9 You have completed the printer settings. Please select "Print a test page" to check the success of the printing. If the printing is not successful, please check the accuracy of the IP address and queue name settings.

